

KINCROME EVOLUTION

Tool Chest 9 Drawer 660mm (26") K7919

Operation Manual

! IMPORTANT: This operating manual contains important safety information, read carefully & understand all information before operating the chest. Save this manual for future use.

- Do not open more than one drawer at a time.
- Do not step on drawers.
- Do not let children near the Toolbox.
- Do not separate Chest from Trolley.
- Do not exceed Drawer Load Limit.
- Not suitable for mounting in Vehicles.
- Lock drawers and lid before moving the Toolbox.



Parts List



Measurements:		Weight: 28kg			
WIDTH	660 mm	DEPTH	305 mm	HEIGHT	430 mm

Measurements - Top Section					
WIDTH	620 mm	DEPTH	295 mm	HEIGHT	50 mm

Small Drawers					
WIDTH	166 mm	DEPTH	255 mm	HEIGHT	45 mm

Deep Drawers					
WIDTH	560 mm	DEPTH	255 mm	HEIGHT	45 mm

Maintenance

- Periodically tighten all hardware
- Lubricate the slides twice a year
- Lubricate the lock with graphite annually
- Use a damp Microfibre cloth to clean all surfaces

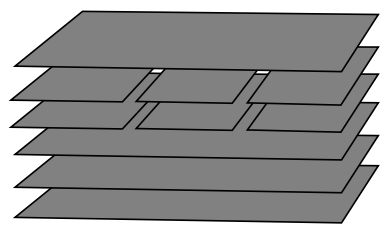
Tools & Assistance
Required for Trolley:

2 People

Included



Keys x 2



10 x Liners

Tool Chest 9 Drawer 660mm (26")

K7919

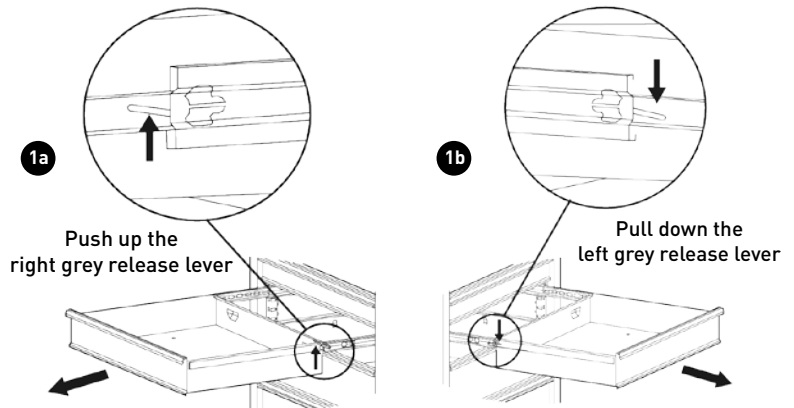
Maintenance

1 Removing the Drawers

- Fully extend the empty drawer.
- Push up the right grey release lever while pushing down the left grey release lever.
- Pull the drawer outward until it is released from the drawer slide.

2 Re-Inserting The Drawers

- Extend the drawer slides.
- Insert the brackets on each side of the drawer into the slots on the slides, being careful that they are properly positioned.
- Once properly inserted, completely close the drawer to set the slides in their proper positions.



Parts List



Spare Parts

ITEM	PART NO.	DESCRIPTION	QUANTITY
1	K7999-1	Lock & Key	1
2	K7999-2	Key Only (Specify Key Number)	1
3	K7999-3	Gas Struts (Pair)	1

ITEM	PART NO.	DESCRIPTION	QUANTITY
4	K7999-4	Ball Bearing Slide (Pair)	9
5	K7999-5	Side Carry Handle x 1	2
6	K7999-22	Eva Mat Pack 8 Pce	1

National Head Office
National Distribution and Showroom
3 Lakeview Dve, Caribbean Business Park
Scoresby Victoria 3179 Australia
ABN 41 007 185 006

Administration
T (03) 9730 7100 F (03) 9730 7199
E enquiries@kincrome.com.au
W kincrome.com.au

Customer Service Centre
T 1300 657 528 F 1300 556 005

Made to Kincrome Tools & Equipment Pty Ltd Global specifications and quality standards in China
Kincrome UK Ltd PO Box 468 Southampton SO30 9EP

Australia & Global	UK & EU
www.kincrome.com.au	www.kincrome.co.uk
enquiries@kincrome.com.au	enquiries@kincrome.co.uk