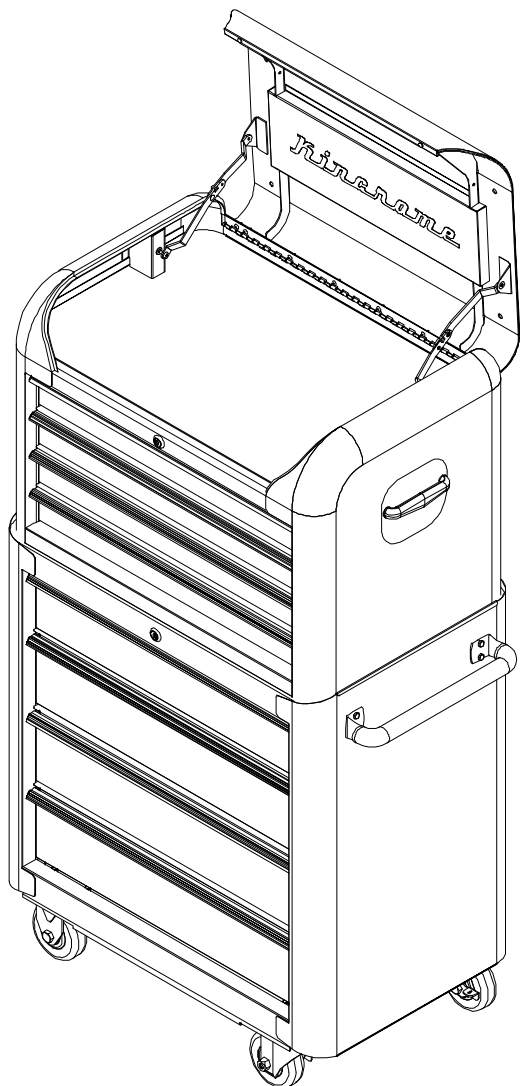


Kincrome



28" Wide Tool Chest and Cabinet

Model: P7328

OWNER'S MANUAL

ATTENTION

1. To reduce the risk of injury, read and follow all safety and assembly instructions before using this product for the first time. Save these instructions for future reference.
2. Fill in the following information and retain for future reference:

Model #: _____

Date of purchase: _____

Place of purchase: _____

Receipt # of purchase: _____



DO NOT OPEN MORE THAN
ONE DRAWER AT A TIME.



DO NOT STEP ON DRAWERS.



DO NOT ALLOW CHILDREN NEAR THE
UNIT.



DO NOT LIFT UNIT BY YOURSELF.

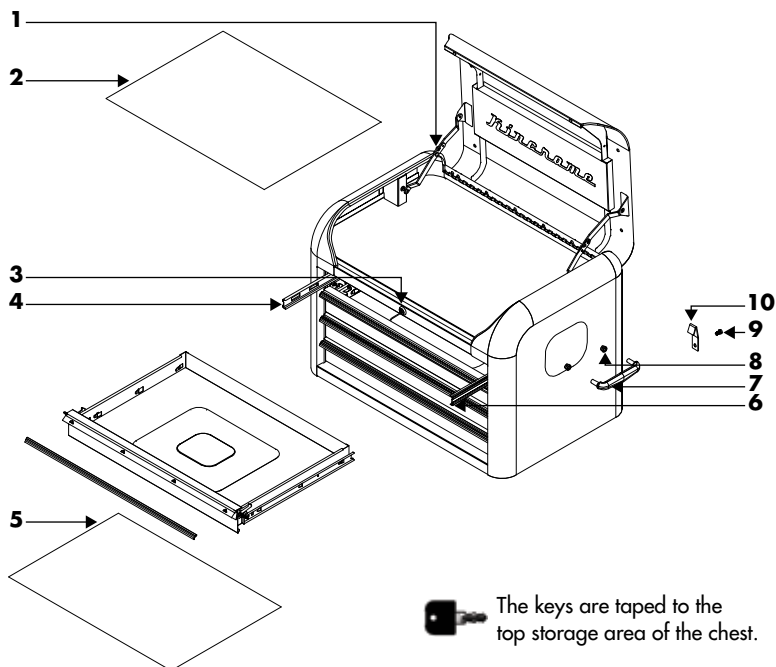


SET THE BRAKE ON THE LOCKING CASTERS
UNLESS YOU ARE MOVING THE UNIT.



LOCK DRAWERS AND LID BEFORE
MOVING THE UNIT.

CHEST PARTS LIST

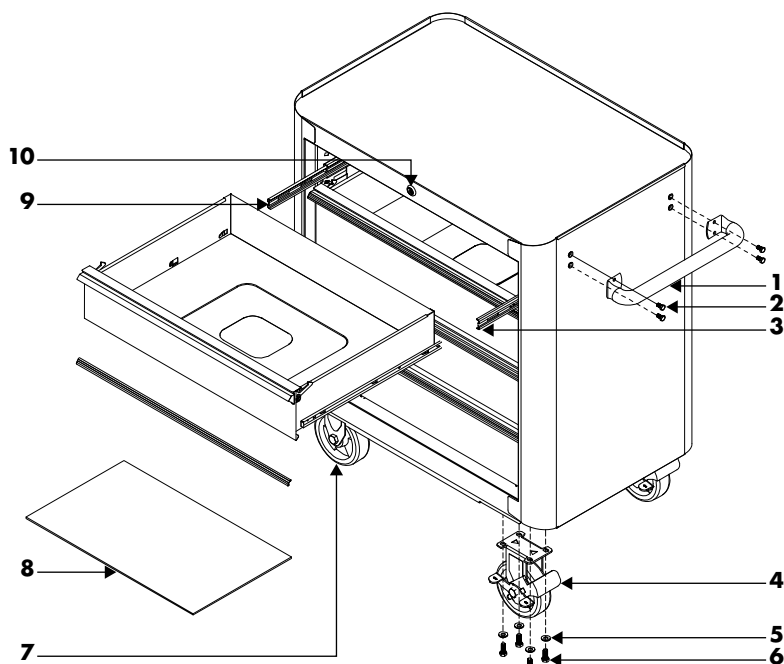


| REF # | PART NAME | PART # | QTY |
|-------|----------------------|----------|-----|
| 1 | Mechanical Struts | P7328-1 | 2 |
| 2 | Till Liner | P7328-2 | 1 |
| 3 | Lock | P7328-3 | 1 |
| 4 | Slides (R) | P7328-4 | 4 |
| 5 | Drawer Liners | P7328-5 | 4 |
| 6 | Slides (L) | P7328-6 | 4 |
| 7 | Chest Handles | P7328-7 | 2 |
| 8 | M8 Hex Nuts | P7328-8 | 4 |
| 9 | M6 x 12 mm Hex Bolts | P7328-9 | 2 |
| 10 | Connectors | P7328-10 | 2 |

Replacement parts can be ordered by calling (+61) 1300-657-528. Please have your original receipt, part number and quantity ready when you order.

Replacement keys may be ordered using the code that appears on the face of the lock.

CABINET PARTS LIST



The keys are taped to the top of the caster carton, which is placed in the bottom left drawer of the cabinet.

| REF # | PART NAME | PART # | QTY |
|-------|----------------------|----------|-----|
| 1 | Cabinet Handle | P7328-11 | 1 |
| 2 | M6 x 12 mm Hex Bolts | P7328-9 | 4 |
| 3 | Slides (R) | P7328-4 | 4 |
| 4 | Swivel Casters | P7328-12 | 2 |
| 5 | Washers | P7328-13 | 16 |
| 6 | M8 x 20 mm Hex Bolts | P7328-14 | 16 |
| 7 | Rigid Casters | P7328-15 | 2 |
| 8 | Drawer Liners | P7328-5 | 4 |
| 9 | Slides (L) | P7328-6 | 4 |
| 10 | Lock | P7328-3 | 1 |

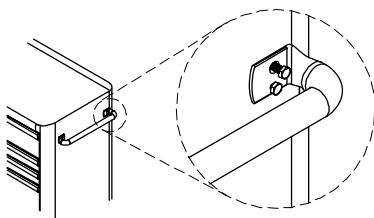
Replacement parts can be ordered by calling (+61) 1300-657-528. Please have your original receipt, part number and quantity ready when you order.

Replacement keys may be ordered using the code that appears on the face of the lock.

CABINET HANDLE INSTALLATION

NOTE: Assemble the handle first to make it easier to move the tool cabinet.

Simply position the cabinet handle over the holes in the cabinet and attach with the M6 x 12 mm hex bolts. Tighten securely.

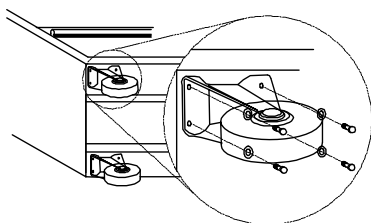


CASTER INSTALLATION

Carefully lay the tool cabinet on its back, with a soft mat underneath for protection.

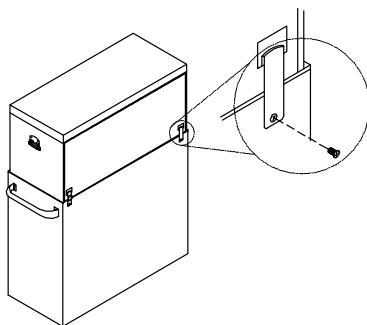
Position the two rigid casters on either the left or right side of the cabinet bottom. Insert the M8 x 20 mm hex bolts through the washers, then through the casters and into the bottom of the cabinet. Tighten securely.

Repeat with the two swivel casters on the other side of the cabinet.

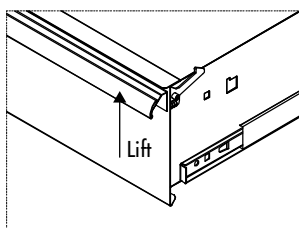


CHEST AND CABINET CONNECTION

Place the chest on the cabinet. Attach the connectors to the chest, making sure that the hook heads snap in the square holes on the back of the chest. Fasten the connectors to the cabinet with the provided screws.



RAISE & RELEASE DRAWER FRONTS

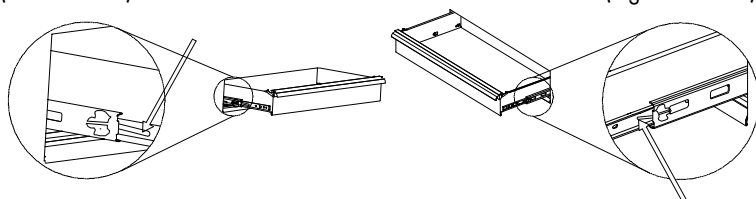


These units are equipped with raise and release drawer fronts. To open, lift up on the drawer front while pulling it towards you. To close, shut the drawer firmly until the latch engages. If the drawer does not stay closed, the hook may be bent or it may be rubbing against the drawer slides. Lightly bend the hook until the drawer will engage in the slide.

DRAWER REMOVAL AND REPLACEMENT

Push down
(left hand side)

Pull up
(Right hand side)



To remove a drawer, pull it out so it's almost fully extended. Pull up on the right hand black release lever, while pushing down on the left hand black release lever. While holding the levers in these positions, pull the drawer outward until it is released from the drawer slide.

To replace a drawer, extend the drawer slides from the tool chest or cabinet. Insert the brackets on each side of the drawer into the slots in the slides, making sure that they are properly inserted. Completely close the drawer to set the slides in their proper positions.

DO NOT attempt to lift the chest by its side handles using chains, ropes or other lifting devices, if two persons cannot lift the chest. Use a forklift placed under the bottom of the chest if this situation occurs. The side handle could fail, which may cause personal injury or damage to the product.

DO NOT stand on this product or lean on the work top.

WEAR SAFETY GLASSES when removing or repositioning the slides. The tool could slip, which may cause personal injury.

When moving this product, do not pull it. Push the product to prevent personal injury.

USE THE BRAKES when not moving this product. This will prevent the product from rolling, which may cause personal injury or product damage.

BE CAREFUL when opening more than one drawer. The product could become unstable and tip, which may cause personal injury or product damage.

DO NOT mount this product on a truck bed or any other moving object. This may cause personal injury or product damage. Mounting this product to any vehicle in any manner will void warranty.

Secure this product properly before moving it with a forklift.

DO NOT tow with power equipment. The product could tip, which may cause personal injury or product damage.

DO NOT alter this product in any manner. For example, do not weld external lockbars or attach electrical equipment. This may cause product damage or personal injury.

Keep this product on level surfaces. It could become unstable and tip if stored or moved on an uneven surface, which may cause personal injury or product damage.

Lock the drawers and lid before moving this product. The drawers could come open and make the product unstable and tip, which may cause personal or product damage.

GENERAL MAINTENANCE

Lubricate the slides (twice a year).

Periodically clean the drawer fronts, drawer trim and other surfaces with mild detergent and water.

Grease and oil can be removed with most standard cleaning fluids. For safety, use a nonflammable cleaning fluid.

KINCROME
TOOLS + EQUIPMENT™

National Head Office

National Distribution and Showroom
3 Lakeview Dve, Caribbean Business Park
Scoresby Victoria 3179 Australia

Administration

T (03) 9730 7100
F (03) 9730 7199

Customer Service Centre

T 1300 657 528
F 1300 556 005

E enquiries@kincrome.com.au
W kincrome.com.au