

KINCROME

PROFESSIONAL QUALITY TOOLS

GAS SOLDERING IRON KIT 3 IN 1

**PIEZO
AUTO
IGNITION**

**INCLUDES
8
ACCESSORIES**

**BLOW
TORCH
FUNCTION**

**BLOW MOULD
CASE DOUBLES
AS WORK
STATION**



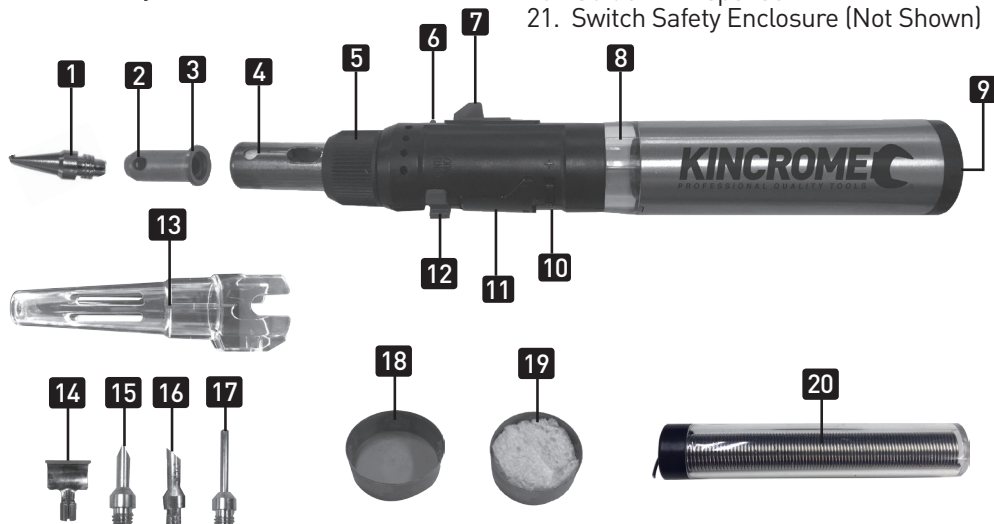
KP15001
ED1 JULY 2016

Table Of Contents

Know Your Product	2
Gas Soldering Iron Safety Instructions	3
Case Layout.....	4
Gas Soldering Iron Refilling, Lighting and Operation	4-6
Cleaning, Maintenance & Storage.....	7
Warranty.....	9

Know Your Product

- | | |
|--------------------------------|---|
| 1. Soldering Tip | 11. Folding Stand |
| 2. Exhaust Port | 12. Continuous Lock |
| 3. Soldering Tip Assembly | 13. Protective Cap |
| 4. Gas Torch Shroud | 14. Deflector |
| 5. Lock Nut | 15. Chisel Tip |
| 6. Lock OFF Button | 16. Anvil Tip |
| 7. Igniter Switch | 17. Needle Tip |
| 8. Gas Level Window/Torch Tank | 18. Tip Cooling Tray |
| 9. Fill Valve | 19. Tip Cleaning Tray with Sponge |
| 10. Flame Adjustment Knob | 20. Solder In Dispenser |
| | 21. Switch Safety Enclosure (Not Shown) |



Specifications

Model No:	KP15001
Fuel Type:	Butane/Butane-Propane Mixture
Gas Fuel Storage:	20ml
Operating Time (Setting #2-3):	60min
Flame Length (From Torch Tip):	50mm
Flame Temperature:	Up to 1300°C (2372°F)
Soldering Tip Temperature:	Up To 450°C (842°F)
Hot Air Temperature:	Up to 600°C (1112°F)
Power Output Range:	30W-120W
Weight:	0.63kg

GENERAL SAFETY WARNINGS

Read and follow operating instructions and warnings and familiarize yourself with the gas soldering iron before lighting or using. Review instructions and warnings periodically to maintain awareness.



WARNING: This tool must be placed on its folding stand when not in use.

- a. Do not leave the appliance unattended when it is switched ON.
- b. This appliance is not intended for use by persons (including children) with reduced physical sensory or mental capabilities, or lack of experience and knowledge, unless they have been given supervision or instruction concerning use of the appliance by a person responsible for their safety.
- c. Children should be supervised to ensure that they do not play with the appliance.
- d. Extremely flammable contents under pressure. Do not expose the torch or fuel to temperatures exceeding 45°C or prolonged sunlight.
- e. Maintain good ventilation.
- f. Always wear goggles and protective gloves and use proper tools to handle hot work.
- g. Never breathe in welding/soldering fumes.
- h. Do not puncture or incinerate.
- i. Never attempt to modify the torch construction, use unapproved accessories or fuels or attempt to repair a damaged torch.
- j. Do not drop the gas soldering iron as the unit might be damaged and ceramic could be broken.
- k. Follow refilling procedure to avoid serious accidents.
- l. Do not ignite the torch near to the face, hands, clothing or inflammable materials.
- m. Please note the butane flame may be barely visible in certain light conditions.
- n. Place the appliance on its stand after use and allow it to cool down before storage;
- o. Allow the gas soldering iron to cool down before storage.
- p. Ensure flame extinguished and gas OFF after each use.
- q. Never attempt to use the gas soldering iron as a cigarette lighter.
- r. Be extra careful when using the gas soldering iron outdoors on sunny or windy days.
- s. Wind may carry the torch's heat back toward you or other areas not intended to be heated.
- t. Never use the gas soldering iron to remove lead-based paint indoors or in any confined area.
- u. Always check to make sure no intended parts or materials are being heated.
- v. Whenever there is a possibility that unintended material has been heated, wait at least two hours before leaving the area.
- w. Be especially careful to avoid fumes from cadmium, plating and galvanized metal.
- x. Beware that the gas soldering iron tip and accessories get hot during use.
- y. Be sure not pointed in a direction which would cause nearby objects to ignite.
- z. Always have a fire extinguisher and a bucket of water near the gas soldering iron and work area.
- aa. Do not use water to cool down the gas soldering iron; it will damage the product.
- ab. The container requires to be stored and/or transported in an upright position.
- ac. The warnings, cautions and instructions discussed in this manual cannot cover all possible conditions and situations that may occur. It must be understood by the operator that common sense and cautions are factors which cannot be built into this product, but must be supplied by the operator.

Description of Symbols

	Read the instruction manual before use. Failure to follow the warnings and instructions may result in electric shock, fire and/or serious injury.		Risk of Explosion
	Wear Respiratory Protection		Wear Eye Protection
	Wear Safety Gloves		

UNPACKING

- Unpack all the components from the packaging.
- When unpacking the KP15001 Gas Soldering Iron, carefully inspect for any damage that may have occurred during transit.
- Check for loose, missing or damaged parts.
- Ensure all packaging materials are disposed of as per your local council guide lines.

Case Layout

- | | |
|---------------------------------|---------------------------------|
| A. Gas Soldering Iron | G. Solder In Dispenser Standing |
| B. Solder In Dispenser | Work Station |
| C. Tip Cooling Tray | H. Anvil Soldering Tip |
| D. Gas Soldering Iron Standing | I. Needle Soldering Tip |
| Work Station | J. Chisel Soldering Tip |
| E. Tip Cooling Tray with Sponge | K. Protective Cap |
| F. Deflector | |



REFILLING OPERATION

Note: Gas soldering Iron does NOT come filled with gas.

WARNING! Before each use and after refilling, listen for leaks. Never use a flame to check for leaks, always use soapy water to identify leaks in gas.

- Ensure that the gas soldering iron is extinguished and cool before refilling.
- Allow sufficient time for the KP15001 to cool to room temperature before refilling the gas soldering iron with fuel.
- Refill KP15001 in a well-ventilated area, free of fire or other sources of ignition, away from bystanders and any flammable substance.
- Never smoke while refilling the KP15001.
- Hold the KP15001 with the FILL VALVE (9) facing upwards (located on the base of the KP15001).
- Invert the refueling canister (not supplied), then insert the butane canister tip into the FILL VALVE (9). Adaptors may be needed, depending on refueling canister type (not supplied).
- Push the butane canister and KP15001 together and allow gas to flow into the GAS LEVEL WINDOW/ TORCH TANK (8).
- The KP15001 should take approximately 5 to 10 seconds to fill.
- Stop refilling once the gas begins to expel from the FILL VALVE (9).
- Wait approximately 2 minutes to allow the gas to stabilize before igniting the KP15001.

Understanding The Supplied Accessories

The KP15001 Kincrome Gas Soldering Iron Kit is supplied with a number of accessories.

- a. **DEFLECTOR (14)** is commonly used in heat shrink applications (Fig 1).
 - To assemble the DEFLECTOR (14) to the gas soldering iron, first remove either the SOLDERING TIP (1), CHISEL TIP (15), ANVIL TIP (16) or NEEDLE TIP (17) from the soldering iron by rotating the tip anti-clockwise. Then you can slide the DEFLECTOR (14) sleeve over the SOLDERING TIP ASSEMBLY (3).
- b. **SOLDERING TIP (1)** is a general size pointed soldering tip, suitable for soldering small wires (Fig 2).
 - The SOLDERING TIP (1) can be removed from the SOLDERING TIP ASSEMBLY (3) by rotating the tip anti-clockwise or installed onto the SOLDERING TIP ASSEMBLY (3) by rotating clockwise.
- c. **CHISEL TIP (15)** is a heavier/wider faced soldering tip, suitable for soldering medium to large wires (Fig 2).
 - The CHISEL TIP (15) can be removed from the SOLDERING TIP ASSEMBLY (3) by rotating the tip anti-clockwise or installed onto the SOLDERING TIP ASSEMBLY (3) by rotating clockwise.
- d. **ANVIL TIP (16)** is a flat faced soldering tip, commonly used for spot/tack soldering (Fig 2).
 - The ANVIL TIP (16) can be removed from the SOLDERING TIP ASSEMBLY (3) by rotating the tip anti-clockwise or installed onto the SOLDERING TIP ASSEMBLY (3) by rotating clockwise.
- e. **NEEDLE TIP (17)** is long narrow soldering tip, that is ideal for soldering where you don't want excessive surface heat generated or for soldering in recessed areas where a conventional standard tip cannot reach (Fig 2).
 - The NEEDLE TIP (17) can be removed from the SOLDERING TIP ASSEMBLY (3) by rotating the tip anti-clockwise or installed onto the SOLDERING TIP ASSEMBLY (3) by rotating clockwise.
- f. **TIP COOLING TRAY (18)** is the round metal tray designed to hold any removed hot soldering tips & accessories, allowing them to cool before placing them back into the cases EVA tray (Fig 3).
- g. **TIP CLEANING TRAY WITH SPONGE (19)** is the round metal tray containing a sponge material. This accessory is designed to assist the user in keeping the soldering tips clean during use (Fig 3).

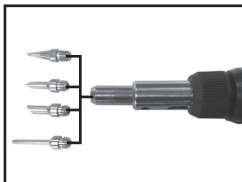


WARNING!: Please take caution when cleaning the soldering tips as the sponge & water contained within the tip can become hot during cleaning.

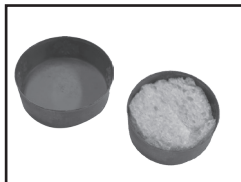
- With the sponge material sitting in the metal tray, add some clean water to the sponge until the water level is just below the sponge height.
 - While the soldering iron & tips are hot, gently swipe the tip face onto the damp sponge. Minimal pressure is needed during this operation and the steam generated while the tip is applied to the sponge will quickly clean any debris from the soldering tips.
- h. **FOLDING STAND (11)** is located on the underside of the soldering iron and can be folded out allowing a hot soldering iron to remain a safe distance away from your workspace (Fig 4).
 - With the FOLDING STAND (11) extended, the soldering iron can be placed onto a surface during operation or once turned OFF, the soldering iron can cool down without making contact with your workspace, ready to put back into the cases EVA tray.



(Fig 1)



(Fig 2)



(Fig 3)



(Fig 4)

LIGHTING AND OPERATION



WARNING!: Before each use, ensure that LOCKING NUT (5) and all related tips and accessories are securely connected and tight.

Press and Hold Mode

- a. Turn FLAME ADJUSTMENT KNOB (10) approximately halfway between (2) and (3) position, located below the FOLDING STAND (11).
- b. Press the LOCK OFF BUTTON (6) down and slide the IGNITER SWITCH (7) away from burner tip.
- c. To turn OFF the KP15001, release IGNITER SWITCH (7) to extinguish KP15001.

Continuous Mode

- Turn FLAME ADJUSTMENT KNOB (10) approximately halfway between (2) and (3) position.
- Press the LOCK OFF BUTTON (6) button down and slide the IGNITER SWITCH (7) away from the BURNER.
- Slide CONTINUOUS LOCK (12) to "CONTINUOUS" position to lock the IGNITER SWITCH (7) in the ON position.
- Release IGNITER SWITCH (7).
- To extinguish the KP15001 slide the CONTINUOUS LOCK (12) to "OFF" position.

ADJUST FLAME/TEMPERATURE

- Slide FLAME ADJUSTMENT KNOB (10) to "1" for small flame/low temperature (Fig 5).
- Slide FLAME ADJUSTMENT KNOB (10) to "4" for large flame/high temperature (Fig 5).



(Fig 5)

USING AS SOLDERING IRON

- The KP15001 is setup for use as a soldering iron and can be used immediately.
- Loosen LOCK NUT (5) and adjust the EXHAUST PORT (2) so that hot air escapes in a safe direction so it does NOT burn the user or damage work surface.
- Tighten LOCK NUT (5) with finger pressure.
- Ignite KP15001 specified in "LIGHTING AND OPERATION".

USE AS A HOT AIR BLOWER/BLOW TORCH

Option 1

- Below instructions based on fully assembled soldering iron.
- Remove the SOLDER TIP (1) from the SOLDERING TIP ASSEMBLY (3) by rotating the SOLDER TIP (1) counter-clockwise.
- KP15001 is now ready for hot air blower operation.
- Ignite KP15001 specified in "LIGHTING AND OPERATION".

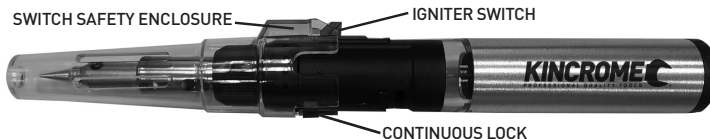
Option 2

- Below instructions based on fully assembled soldering iron.
- Remove the SOLDER TIP (1) from the SOLDERING TIP ASSEMBLY (3) by rotating the soldering tip anti-clockwise, from the GAS TORCH SHROUD (4).
- Rotate the LOCK NUT (5) anti-clockwise to remove the GAS TORCH SHROUD (4) from the Soldering Iron.
- Stand the GAS TORCH SHROUD (4) upright with the LOCK NUT (5) facing down, this will allow the SOLDERING TIP ASSEMBLY (3) to be removed from the GAS TORCH SHROUD (4).
- Reinstall the GAS TORCH SHROUD (4) by rotating the LOCK NUT (5) clockwise, until tight.
- KP15001 is now ready for use in blow torch operation.
- Ignite KP15001 specified in "LIGHTING AND OPERATION".


INSTALLING PROTECTIVE CAP

WARNING! :When installing PROTECTIVE CAP (13), ensure the unit has had sufficient time to cool down before installing!

- Ensure that CONTINUOUS LOCK (12) is in the "OFF" position.
- Align and slide the PROTECTIVE CAP (13) apertures over the IGNITER SWITCH (7) and CONTINUOUS LOCK (12), ensuring the IGNITER SWITCH (7) is covered by the SWITCH SAFETY ENCLOSURE (21) of the PROTECTIVE CAP (13), as shown in the picture below.
- Ensure that entire tip assembly is fully covered by the PROTECTIVE CAP (13).



CLEANING & MAINTENANCE

 **WARNING!** Never use solvents or other harsh chemicals for cleaning any parts of the tool. These chemicals may weaken the plastic materials used in these parts. Use a cloth dampened only with water and mild soap. Never let any liquid get inside the tool; never immerse any part of the tool into a liquid.

STORAGE

- Ensure that CONTINUOUS LOCK (12) is in the "OFF" position.
- Release IGNITER SWITCH (7).
- Allow several minutes for KP15001 to cool.
- Install PROTECTIVE CAP (13) firmly and ensure IGNITER SWITCH (7) is in the OFF position.
- Store torch out of reach of children in the protective case.
- Do not expose/store KP15001 to temperatures in excess of 45°C.
- Store KP15001 in well ventilated areas.

SPARE PARTS

For a full list of available spare parts for this item visit the Kincrome website kincrome.com.au or alternatively contact Kincrome Customer Service.

ALSO AVAILABLE PLASTIC WELDING KIT



The KP15002 Plastic Welding Kit can help avoid the need to pay for costly repairs on: Automotive, Marine, Motorcycle products such as Bumpers, Headlight fixings, Moldings, Farrings etc. You can also use the Plastics Welding kit to repair: Leisure products, toys, household items and almost anything made from a plastic material, as long as the plastic is made from either of the 4 material types include in the kit.

SERVICE

Have your product serviced by a qualified repair person using only identical replacement parts. This will ensure that the safety, reliability and performance of the gas soldering iron kit is maintained.

OFFICE CONTACT DETAILS



Phone: 1300 657 528



Fax: 1300 556 005



Email: enquiries@kincrome.com.au



Website: www.kincrome.com.au

CARING FOR THE ENVIRONMENT

When a tool is no longer usable it should not be disposed of with household waste, but in an environmentally friendly way. Please recycle where facilities exist. Check with your local council authority for recycling advice.



Recycling packaging reduces the need for landfill and raw materials. Reuse of recycled material decreases pollution in the environment. Please recycle packaging where facilities exist. Check with your local council authority for recycling advice.

Notes:

12
MONTH
WARRANTY

Warranty given by Kincrome Australia Pty Ltd of 3 Lakeview Drive, Caribbean Park, Scoresby, Victoria (Tel 1300 657 528). The applicable warranty period (12 months) commences on the date that the product is purchased. If this product has materials or workmanship defects (other than defects caused by abnormal or non warranted use) you can, at your cost, send the product to place of purchase, an authorised Kincrome service agent or one of Kincromes addresses for repair or replacement. Your rights under this warranty are in addition to any other rights you have under the Australian Consumer Law or other applicable laws. Our goods come with guarantees that cannot be excluded under the Australian Consumer Law. You are entitled to a replacement or refund for a major failure and compensation for any other reasonably foreseeable loss or damage. You are also entitled to have the goods repaired or replaced if the goods fail to be of acceptable quality and the failure does not amount to a major failure. For further details please visit www.kincrome.com.au or call us. Due to minor changes in design or manufacture, the product you purchase may sometimes differ from the one shown on the packaging.



www.kincrome.com.au