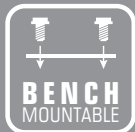


# KINCROME<sup>®</sup>

PROFESSIONAL QUALITY TOOLS

## METAL THROATLESS SHEAR CUTTER 100MM



KP15101  
ED1 JAN 2018



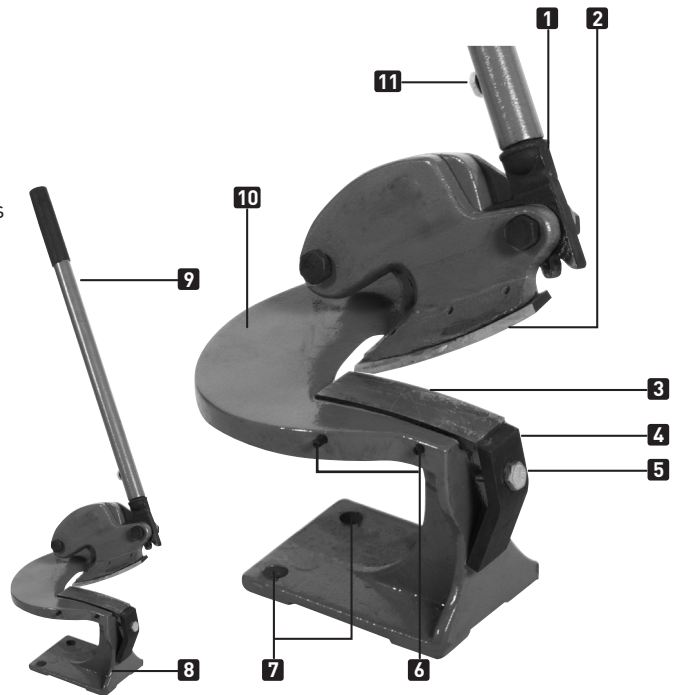
**NOTICE!** If you are new to Metal Shearing, we **STRONGLY RECOMMEND** that you seek training prior to using this shear. Kinchrome will not be liable for accidents caused by lack of knowledge or training.

**Table of Contents**

Know Your Product ..... 1  
 Safety Instructions..... 2  
 Assembly Instructions..... 3  
 Operation Instructions ..... 4  
 Blade Replacement & Maintenance ..... 5  
 Spare Parts, Warranty & Troubleshooting ..... 6

**Know your product**

1. Geared Handle
2. Upper Blade
3. Lower Blade
4. Blade Clamp
5. Blade Clamp Bolt
6. Blade Adjustment Grub Screws
7. Mounting Holes
8. Base
9. Handle
10. Bed
11. Handle Locking Bolt



|                                      |  |
|--------------------------------------|--|
| <b>Model No:</b> .....               | KP15101                                |
| <b>Cutting Material Types:</b> ..... | Aluminium, Mild Steel, Stainless Steel |
| <b>Cutting Capacity:</b>             |  |
| Mild Steel: .....                    | 1.5mm                                  |
| Aluminium: .....                     | 2.5mm                                  |
| Stainless Steel: .....               | 1.2mm                                  |
| <b>Max Single Shear Width:</b> ..... | 70mm                                   |
| <b>Blade Length:</b> .....           | 100mm                                  |
| <b>Blade Material:</b> .....         | Hardened Alloy Steel                   |
| <b>Handle Length:</b> .....          | 460mm                                  |
| <b>Product Height:</b> .....         | 69.5cm                                 |
| <b>Product Length:</b> .....         | 21.5cm                                 |
| <b>1 Weight:</b> .....               | 7kg                                    |

**GENERAL SAFETY WARNINGS**

Save all warnings and instructions for future reference.

**WARNING!** Read all safety warnings and all instructions. Failure to follow the warnings and instructions may result in serious injury.

**WARNING:** The warnings, cautions, and instructions discussed in this instruction manual cannot cover all possible conditions and situations that may occur. It must be understood by the operator that common sense and caution are factors which cannot be built into this product, but must be supplied by the operator.

**1) WORK AREA**

- a) **Keep work area clean and well lit.** Cluttered and/or dark areas invite accidents.
- b) **Keep children and bystanders away while operating a Shear.** Distractions can cause you to lose concentration.
- c) **This Shear is not intended for use by persons (including children) with reduced physical, sensory or mental capabilities, or lack of experience and knowledge, unless they have been given supervision or instruction concerning use of the Shear by a person responsible for their safety.**
- d) **Children should be supervised to ensure that they do not play with the Shear. This Shear is not a toy.**

**2) PERSONAL SAFETY**

**WARNING!** Always wear Australian compliant personal protective equipment.

- a) **Stay alert, watch what you are doing and use common sense when operating a Shear.** Do not use a Shear while you are tired or under the influence of drugs, alcohol or medication. A moment of inattention while operating shears may result in serious personal injury.
- b) **Use personal protective equipment.** Always wear eye protection. Protective equipment such as gloves, dust mask, non-skid safety shoes with steel caps, hard hat, full face shield, and/or hearing protection used for appropriate conditions will reduce personal injuries, as the work can create metal splinters and chips.
- d) **Do not overreach. Keep proper footing and balance at all times.** This enables better control of the Shear at all times.
- c) **Dress properly. Do not wear loose clothing or jewellery. Keep your hair, clothing and gloves away from moving parts.** Loose clothes, jewellery or long hair can be caught in moving parts.

**3) ADDITIONAL SAFETY WARNINGS FOR SHEARS**

**WARNING!** DO NOT let comfort or familiarity with product (gained from repeated use) replace strict adherence to the tool safety rules. If you use this Shear unsafely or incorrectly, serious personal injury may occur.

- a) **Do not force the Shear. Use the correct Shear for the application.** The correct Shear will do the job better and safer at the rate for which the Shear is designed.
- b) **Do not modify or alter this Shear or use it for an unintended purpose.**
- c) **Do not increase the length of the handle temporarily or permanently.**
- d) **Only use this Shear when fixed on a surface that is stable, level, dry and not slippery, and capable of sustaining the load.**
- e) **Do not use the Shear if any parts are damage broken or misplaced.** Repair or replace the parts.
- f) **The workpiece may be sharp after shearing, use caution.** Be aware of sharp edges or sharp shreds of metal that may be created. Use heavy gloves when handling the workpiece.

**4) SERVICE**

- a) **Have your Shear serviced by a qualified repair person using only identical replacement parts.** This will ensure that the correct operation of the Shear is maintained.

**5) DESCRIPTION OF SYMBOL**

The following symbols are shown on the tool:



Wear Safety Gloves



Wear Safety Boots



Read the instruction manual before use



Warning



Beware of Sharp edges



Wear Eye Protection



Wear Ear Protection



Wear Head Protection

**UNPACKING**

After unpacking, check to make sure that all parts shown in "Know Your Product" have been supplied. If any parts are missing or broken, please contact the place of purchase.

**ASSEMBLY**

**Minor assembly of the Throatless Shear is required.**

1. This machine must be mounted to a stand or workbench, using the mountings holes (7) in the Base (8) with appropriate fasteners before operation (not supplied) (Fig 1). The work bench should be anchored to the wall or floor.
2. The unpainted surface of the Throatless Shear are coated with a rust preventing waxy oil and should be removed before you begin operating. Use a solvent cleaner that will not damage painted surfaces.
3. Slide the Handle (9) over the shaft of the Geared Handle (1) (Fig 2) and tighten locking Bolt (11) using a 14mm spanner (not supplied) (Fig 3).

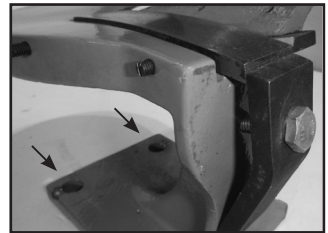


Fig 1

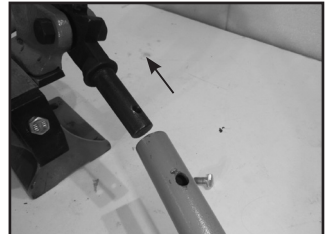


Fig 2

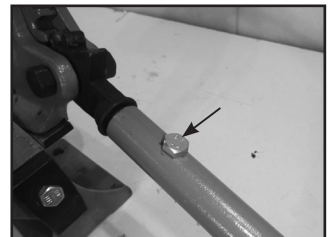


Fig 3

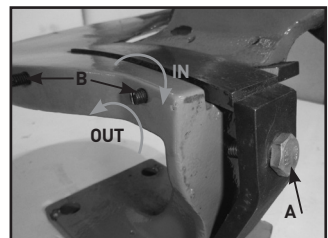


Fig 4

**WARNING:** Take caution when working around sharp blade edges

**ADJUSTMENTS OF SHEAR BLADES**

**Note:** The Shear has been setup in the factory and should not require any initial adjustments. The clearance should be adjusted to between 1/4 and 1/10 of the thickness of the workpiece.

To adjust the clearance between the Upper Blade (2) and Lower Blade (3).

1. Loosen the Blade Clamp Bolt (5) securing the Blade Clamp (4) (Fig 4A).
2. To decrease the clearance, turn the Blade Adjusting Grub Screws (6) clockwise (Fig 4B).
3. To increase clearance, turn the Blade Adjusting Grub Screws (6) counterclockwise (Fig 4B).
4. Push the lower blade back against the two grub screws and check clearance.
5. Re-tighten the Blade Clamp Bolt (5), test the cutting action. Repeat above steps if required.

**OPERATION**

1. For greater control of the workpiece, start all cuts at the back of the blades. Circular and irregular cuts are made by turning the workpiece while following through with the downward stroke of the blade (Fig 5).
2. When a cut has been completed, raise the Handle (9) to lift the blade and push the workpiece forward. Start the next cut at the back of the blade.
3. Always keep the material being cut flat on the Bed (10) of the shear (Fig 6).

**Replace the Blades**

**Caution:** To reduce risk of injury, it is recommended that the Handle (1) is removed before changing the blades.

**Moving/Upper Blade (2) Removal**

1. Open jaws completely. Be sure to use caution when replacing the blade; if the Handle (9) is bumped the blades may move, causing personal injury.
2. Using a Phillips head screw driver (not supplied) remove all three counter sunk screws in the Upper Blade (2) (Fig 7).
3. Remove the Upper Blade (2), and re-secure a new Upper Blade (2) with the counter sunk screws.

**Lower/Table Blade (3) Removal**

4. Using a 14mm spanner (not supplied) loosen the Blade Clamping (5) Bolt. Remove and replace the Lower Blade (3). Align the new Lower Blade (3) against both adjusting grub screws and replace the Blade Clamp (4) and Blade Clamping Bolt (5) (Fig 8).
5. Alter the Blade Adjustment Grub Screws (6) to adjust the Lower Blade (3) to required clearance for the workpiece (Fig 8B).
6. After the Lower Blade (3) is properly adjusted, fully tighten Blade Clamping Bolt (5) Lock Bolt, to secure it in place (Fig 8A). Re-check clearance and perform test cuts.

**CLEANING AND MAINTENANCE**

1. Periodically use Graphite Oil to lubricate blade edges and gears on the Geared Handle (1).
2. Keep all areas of the tool clean, particularly those surfaces that contact sheetmetal workpieces. Dirt and metal chips can mark the workpiece.
3. Use a mild solvent cleaner that will not damage painted surfaces. Wipe the unpainted parts of the Shear with a light coat of camelia oil to prevent rust.
4. Store in a clean & dry environment when not in use.



Fig 5



Fig 6

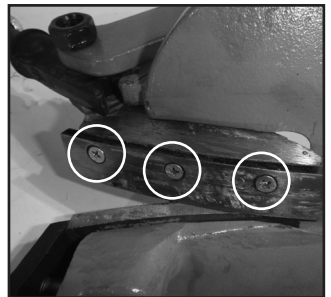


Fig 7

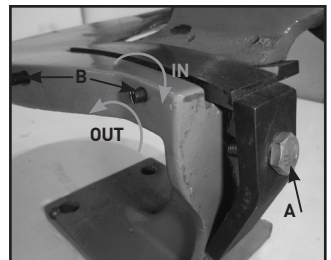


Fig 8

## 7) TROUBLESHOOTING

| PROBLEM               | CAUSES  | SOLUTIONS   |
|-----------------------|---|---|
| Shear will not cut    | Blunt blades  | Sharpen or replace shearing blades                                      |
|                       | Incorrect blade adjustment  | Adjust lower shearing blade   |
|                       | Material too thick/hard   | Cease use of shear and use larger shear                                 |
| Scratches on material | Debris on shear bed   | Clean shear bed   |
| Shear hard to operate | Material thickness exceeds shear specifications                       | Cease operating shear and use a larger shear or other method of cutting |
|                       | Shear assembly bolts too tight, or requires lubrication of components | Check and adjust assembly bolts or lubricate shear components           |
|                       | Material too hard   | Cease operating shear and use a larger shear or other method of cutting |

### IMPORTANT!

If the throatless metal shear still fails to operate correctly after you have carried out the trouble shooting operations, or in the event of anomalies other than those described above, contact Kinchrome Customer Service on 1300 657 528 for assistance.

### Spare Parts

A full list of available spare parts for this item visit the Kinchrome website [kinchrome.com.au](http://kinchrome.com.au) or alternatively contact Kinchrome Customer Service.

#### Australian Office Contact Details



**Phone:** 1300 657 528



**Fax:** 1300 556 005



**Email:** [enquiries@kinchrome.com.au](mailto:enquiries@kinchrome.com.au)



**Website:** [www.kinchrome.com.au](http://www.kinchrome.com.au)

#### UK Office Contact Details



**Mail:** Kinchrome UK Ltd PO Box 646  
Eastleigh S050 ONA



**Email:** [enquiries@kinchrome.co.uk](mailto:enquiries@kinchrome.co.uk)

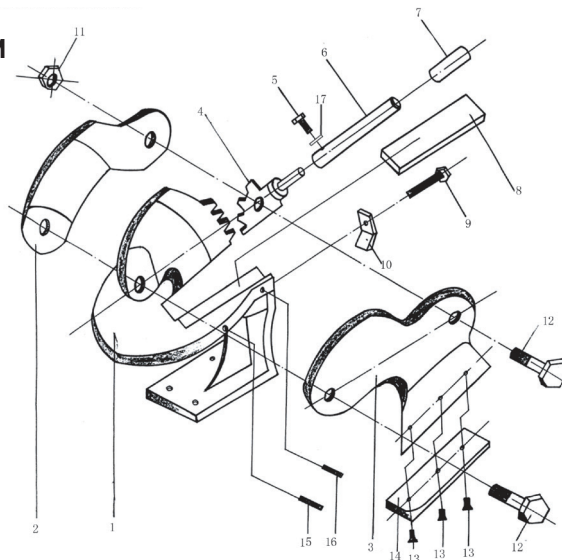


**Website:** [www.kinchrome.co.uk](http://www.kinchrome.co.uk)

**PARTS LIST**

| No. | Description                 | Qty | No. | Description               | Qty |
|-----|-----------------------------|-----|-----|---------------------------|-----|
| 1   | Body                        | 1   | 10  | Blade Clamp               | 1   |
| 2   | Pivot Arm                   | 1   | 11  | Pivot Nut M12             | 1   |
| 3   | Blade Carrier               | 1   | 12  | Upper Blade Screws M5 x 8 | 3   |
| 4   | Geared Handle               | 1   | 13  | Upper Blade               | 1   |
| 5   | Handle Bolt M8 X 20         | 1   | 14  | Adjusting Screw M5 X 35   | 1   |
| 6   | Handle                      | 1   | 15  | Adjusting Screw M5 X 20   | 1   |
| 7   | Handle Grip                 | 1   | 16  | Spring Washer             | 1   |
| 8   | Lower Blade                 | 1   |     |                           |     |
| 9   | Blade Clamp Bolt<br>M8 x 20 | 1   |     |                           |     |

**EXPLODED DIAGRAM**



**12  
MONTH  
WARRANTY**

Warranty given by Kincrome Australia Pty Ltd of 3 Lakeview Drive, Caribbean Park, Scoresby, Victoria (Tel 1300 657 528). The applicable warranty period (12 months) commences on the date that the product is purchased. If this product has materials or workmanship defects (other than defects caused by abnormal or non warranted use) you can, at your cost, send the product to place of purchase, an authorised Kincrome service agent or one of Kincromes addresses for repair or replacement. Your rights under this warranty are in addition to any other rights you have under the Australian Consumer Law or other applicable laws. Our goods come with guarantees that cannot be excluded under the Australian Consumer Law. You are entitled to a replacement or refund for a major failure and compensation for any other reasonably foreseeable loss or damage. You are also entitled to have the goods repaired or replaced if the goods fail to be of acceptable quality and the failure does not amount to a major failure. For further details please visit [www.kincrome.com.au](http://www.kincrome.com.au) or call us. Due to minor changes in design or manufacture, the product you purchase may sometimes differ from the one shown on the packaging.



[www.kincrome.com.au](http://www.kincrome.com.au)