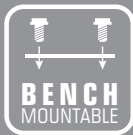


# KINCROME<sup>®</sup>

PROFESSIONAL QUALITY TOOLS

## METAL SHEAR 200MM



**NOTICE!** If you are new to Metal Shearing, we **STRONGLY RECOMMEND** that you seek training prior to using this Metal Shear. Kincrome will not be liable for accidents caused by lack of knowledge and/or training.

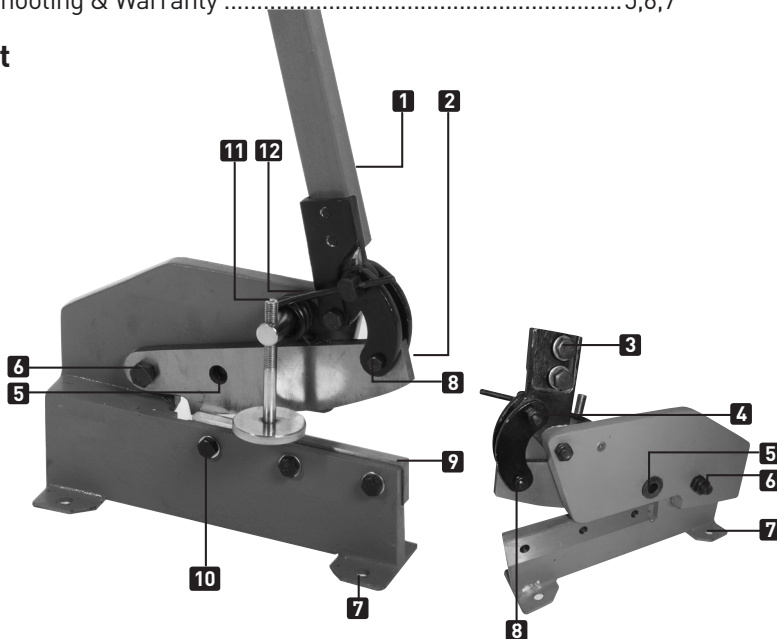
KP15102  
ED1 JAN 2018

## Table of Contents

Know Your Product .....	1
Safety Instructions.....	2
Assembly Instructions.....	3
Operation Instructions .....	3,4
Blade Replacement & Maintenance .....	4
Spare Parts, Troubleshooting & Warranty .....	5,6,7

## Know your product

1. Handle
2. Upper Blade
3. Handle Bolts
4. Upper Lever Bolt
5. Shearing Port
6. Main Pivot Bolt
7. Mounting Holes
8. Lower Lever Bolt
9. Lower Blade
10. Lower Blade Bolt
11. Material Clamp
12. Return Spring



<b>Model No:</b> .....	KP15102
<b>Blade Length:</b> .....	200mm
<b>Max Single Shear Width:</b> .....	185mm
<b>Material Types:</b> .....	Aluminium, Mild Steel, Stainless Steel
<b>Blade Material</b> .....	Tool Steel
<b>Cutting Capacity:</b>	
<b>Sheet:</b>	
Mild Steel: .....	5mm
Aluminium: .....	8mm
Stainless Steel: .....	4mm
<b>Round Bar:</b>	
Mild Steel: .....	10mm
Stainless Steel: .....	8mm
<b>Handle Length:</b> .....	600mm
<b>Weight:</b> .....	16.4kg

## GENERAL SAFETY WARNINGS



Save all warnings and instructions for future reference.

**WARNING!** Read all safety warnings and all instructions. Failure to follow the warnings and instructions may result in serious injury.

**WARNING:** The warnings, cautions, and instructions discussed in this instruction manual cannot cover all possible conditions and situations that may occur. It must be understood by the operator that common sense and caution are factors which cannot be built into this product, but must be supplied by the operator.

### 1) WORK AREA

- a) **Keep work area clean and well lit.** Cluttered and/or dark areas invite accidents.
- b) **Keep children and bystanders away while operating a Shear.** Distractions can cause you to lose concentration.
- c) **This Shear is not intended for use by persons (including children) with reduced physical, sensory or mental capabilities, or lack of experience and knowledge, unless they have been given supervision or instruction concerning use of the Shear by a person responsible for their safety.**
- d) **Children should be supervised to ensure that they do not play with the Shear.** This Shear is not a toy.

### 2) PERSONAL SAFETY

- a) **Stay alert, watch what you are doing and use common sense when operating a Shear.** Do not use a Shear while you are tired or under the influence of drugs, alcohol or medication. A moment of inattention while operating shears may result in serious personal injury.
- b) **Use personal protective equipment.** Always wear eye protection. Protective equipment such as gloves, dust mask, non-skid safety shoes with steel caps, hard hat, full face shield, and/or hearing protection used for appropriate conditions will reduce personal injuries, as the work can create metal splinters and chips.

**WARNING!** Always wear Australian compliant personal protective equipment.

- c) **Do not overreach. Keep proper footing and balance at all times.** This enables better control of the Shear in all conditions.
- d) **Dress properly. Do not wear loose clothing or jewellery. Keep your hair, clothing and gloves away from moving parts.** Loose clothes, jewellery or long hair can be caught in moving parts.

### 3) ADDITIONAL SAFETY WARNINGS FOR SHEARS

**WARNING! DO NOT** let comfort or familiarity with product (gained from repeated use) replace strict adherence to the tool safety rules. If you use this Shear unsafely or incorrectly, serious personal injury may occur.

- a) **DO NOT force the Shear. Use the correct Shear for the application.** The correct Shear will do the job better and safer at the rate for which the Shear is designed.
- b) **DO NOT modify or alter this Shear or use it for an unintended purpose.**
- c) **DO NOT increase the length of the handle temporarily or permanently.**
- c) **Only use this Shear when fixed on a surface that is stable, level, dry and not slippery, and capable of sustaining the load.**
- d) **DO NOT use the Shear if any parts are damage broken or misplaced.** Repair or replace the parts.
- e) **The workpiece may be sharp after shearing, use caution.** Be aware of sharp edges or sharp shreds of metal that may be created. Use heavy gloves when handling the workpiece.

### 4) SERVICE

- a) **Have your Shear serviced by a qualified repair person using only identical replacement parts.** This will ensure that the correct operation of the Shear is maintained.

## 5) DESCRIPTION OF SYMBOL

The following symbols are shown on the tool:



Wear Safety Gloves



Wear Safety Boots



Read the instruction manual before use



Warning



Beware of Sharp edges



Wear Eye Protection



Wear Ear Protection



Wear Head Protection

## UNPACKING

After unpacking, check to make sure that all parts shown in "Know Your Product" have been supplied. If any parts are missing or broken, please contact the place of purchase.

## ASSEMBLY

**Caution:** It is recommended bolting this Shear to the concrete floor when cutting large capacity materials.

**Caution:** If mounting to a work bench, the work bench should be anchored to the wall and/or floor.

1. The Shear must be assembled and operated indoors on a flat & level work bench (capable of holding the static weight of the unit plus the stresses from operation), or concrete floor. Leave adequate working space around the shear for safe operation.
2. Use the mounting holes in the base as a template, drill the mounting holes (Fig 1).  
**Note:** Use a minimum of M13 fasteners (not supplied) to secure the shear.
3. Bolt the Handle (1) to the Metal Shear using the two bolts (3) and washers supplied (Fig 2).

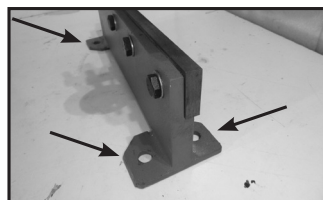


Fig 1

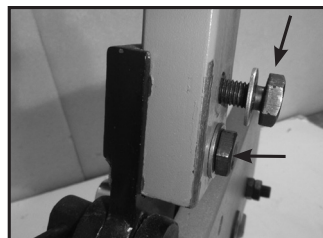


Fig 2

## OPERATION

**WARNING!** The Handle (1) of this tool is spring loaded. Take caution when using the shear to avoid injury if the Handle (1) is released before fully returned upright.

**WARNING!** The work place must be well illuminated to prevent any possible incorrect operations.

**WARNING!** Never exceed the maximum cutting capacity. If material is too thick or too hard, do not force shear! Instead, use metal-cutting bandsaw or larger shear to cut workpiece.

**WARNING!** Keep fingers, hands, and all body parts away from blades and cutting area at all times.

**WARNING!** Prevent unauthorized use by untrained users or children. Keep children and bystanders at a safe distance while operating the shear.

### Cutting Flat Bar or Sheet Metal

1. Place workpiece between the Upper Blade (2) and Lower Blade (9) ensuring the Material Clamp (4) is just touching the top of the workpiece (Fig 3A).
2. The Material Clamp (4) height can be adjusted for different thicknesses of workpieces by rotating clockwise to decrease the height or anti-clockwise to increase the height. Ensure that the Material Clamp (4) always keeps the workpiece flat and level (Fig 3B).
3. Using slow and even pressure, pull Handle (1) down to cut the workpiece.

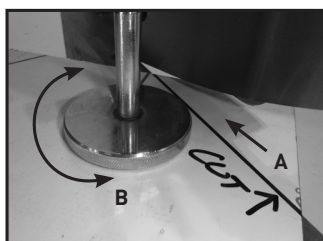


Fig 3

## OPERATION (continued)

### Cutting Rod

1. Round bar should ALWAYS be inserted through the Shearing Port (5) located on the outer face of the Upper Cutting Blade (2) (Fig 4).
2. Using slow and even pressure, pull Handle (1) down to cut the workpiece.

**CAUTION:** To reduce risk of injury, it is recommended that the Handle (1) is removed before changing the blades.

## REPLACEMENT OF BLADES

**WARNING!** The blades are extremely sharp! Use extreme care when handling to avoid personal injury!

### REMOVAL

#### Upper Blade

1. Raise Handle (1) to open Upper Blade (2).
2. Insert a large screwdriver or similar metal object into the Shearing Port (5) to limit blade movement (Fig 5). In addition, you can place a piece of suitable scrap wood between the Upper Blade (2) and Lower Blade (9) (Fig 6).
3. Using 13mm & 14mm spanner, (not supplied) loosen and remove the Lower Lever Bolt (8) Lock Nut (Fig 7A) & Nut (Fig 7B), then remove the Lower Lever Bolt (8) (Fig 7C).
4. Using two 21mm spanners (not supplied), loosen and remove the Main Pivot Bolt (6) Locknut (Fig 8A), Nut (Fig 8B) and remove the main Pivot Bolt (6) (Fig 9).
5. At this point the Upper Blade (2) will be free. Carefully hold the Blade with one hand while removing previously placed screwdriver or similar metal object from the Shear Hole Port (5).
6. Carefully remove the Upper Blade (2).
7. Blade replacement in the reverse procedure to removal.

#### Lower Blade

1. Using a 16mm spanner (not supplied), loosen and remove the three Lower Blade Bolts (10) and washers (Fig 10).
2. Carefully remove the Lower Blade (9).
3. Blade replacement is the reverse procedure of blade removal.

## CLEANING AND MAINTENANCE

1. Always keep blades lubricated with light oil.
2. Keep pivot points tight. Check all shear hardware before every use for loose or worn components.
3. Provide several drops of oil to pivot points periodically to prevent binding.
4. Keep all areas of the Shear clean, particularly those surfaces that contact your workpieces.
5. Dirt and metal chips can cause uneven clamping and inaccurate cuts.
6. Use a mild solvent cleaner that will not damage painted surfaces.
7. Wipe the unpainted parts of the Shear with a light coat of camelia oil to prevent rust.

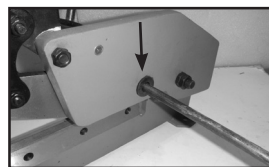


Fig 4



Fig 5



Fig 6

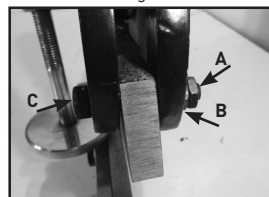


Fig 7



Fig 8

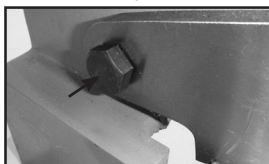


Fig 9

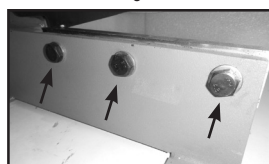


Fig 10

## 7) TROUBLESHOOTING

PROBLEM	CAUSES	SOLUTIONS
Shear will not cut	Blunt blades	Sharpen or replace cutting blades
	Material too thick/hard	Cease use of shear and use larger shear or other metal cutting tool
Scratches on material	Debris on shear bed	Clean shear bed
Shear hard to operate	Material thickness exceeds shear specifications	Cease use of shear and use larger shear or other metal cutting tool
	Shear assembly bolts too tight, or requires lubrication of components	Check and adjust assembly bolts or lubricate shear components

## IMPORTANT!

If the metal shear still fails to operate correctly after you have carried out the trouble shooting operations, or in the event of anomalies other than those described above, contact Kincrome Customer Service on 1300 657 528 for assistance.

## Spare Parts

A full list of available spare parts for this item visit the Kincrome website [kincrome.com.au](http://kincrome.com.au) or alternatively contact Kincrome Customer Service.

### Australian Office Contact Details



**Phone:** 1300 657 528



**Fax:** 1300 556 005



**Email:** [enquiries@kincrome.com.au](mailto:enquiries@kincrome.com.au)



**Website:** [www.kincrome.com.au](http://www.kincrome.com.au)

### UK Office Contact Details



**Mail:** Kincrome UK Ltd PO Box 646  
Eastleigh SO50 0NA



**Email:** [enquiries@kincrome.co.uk](mailto:enquiries@kincrome.co.uk)



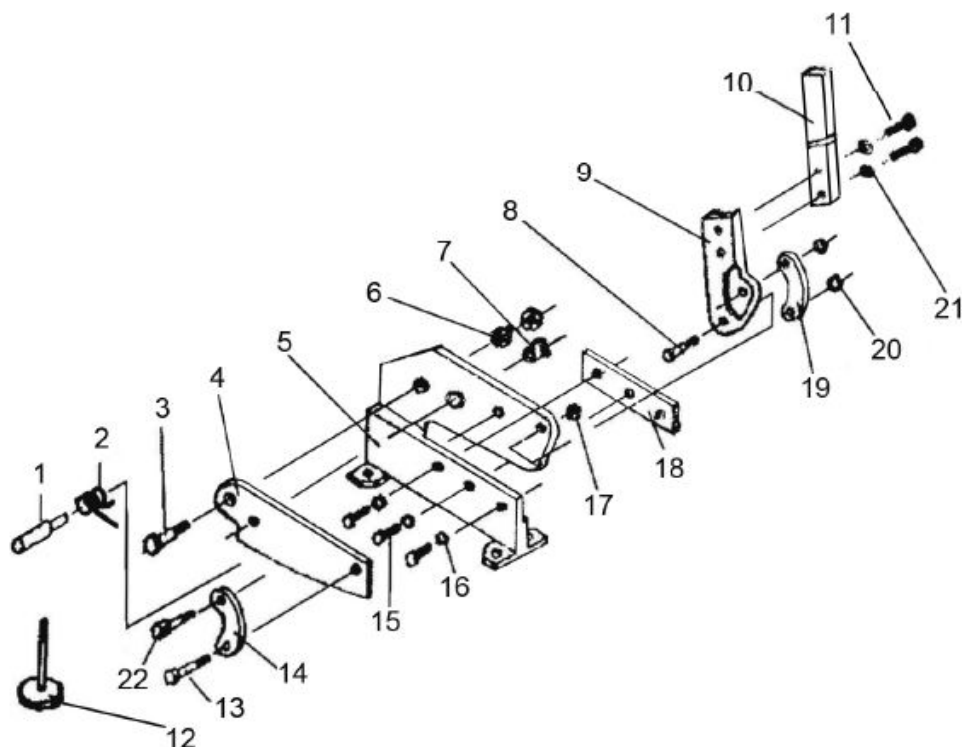
**Website:** [www.kincrome.co.uk](http://www.kincrome.co.uk)

**PARTS LIST**

No.	Description		
1	Pivot Shaft	11	Bolt
2	Return Spring	12	Material Clamp
3	Main Pivot Bolt	13	Lower Lever Bolt
4	Upper Blade	14	Right Lever
5	Body	15	Bolt
6	Washer	16	Washer
7	Rod Shearing Bush	17	Nut
8	Hinge Bolt	18	Lower Blade
9	Arm	19	Left Lever
10	Handle	20	Nut
		21	Washer
		22	Upper Lever Bolt

**PARTS AVAILABLE**

No.	Description
4	Upper Blade
18	Lower Blade
7	Rod Shearing Bush

**EXPLODED DIAGRAM****12  
MONTH  
WARRANTY**

Warranty given by Kincrome Australia Pty Ltd of 3 Lakeview Drive, Caribbean Park, Scoresby, Victoria (Tel 1300 657 528). The applicable warranty period (12 months) commences on the date that the product is purchased. If this product has materials or workmanship defects (other than defects caused by abnormal or non warranted use) you can, at your cost, send the product to place of purchase, an authorised Kincrome service agent or one of Kincromes addresses for repair or replacement. Your rights under this warranty are in addition to any other rights you have under the Australian Consumer Law or other applicable laws. Our goods come with guarantees that cannot be excluded under the Australian Consumer Law. You are entitled to a replacement or refund for a major failure and compensation for any other reasonably foreseeable loss or damage. You are also entitled to have the goods repaired or replaced if the goods fail to be of acceptable quality and the failure does not amount to a major failure. For further details please visit [www.kincrome.com.au](http://www.kincrome.com.au) or call us. Due to minor changes in design or manufacture, the product you purchase may sometimes differ from the one shown on the packaging.





[www.kincrome.com.au](http://www.kincrome.com.au)