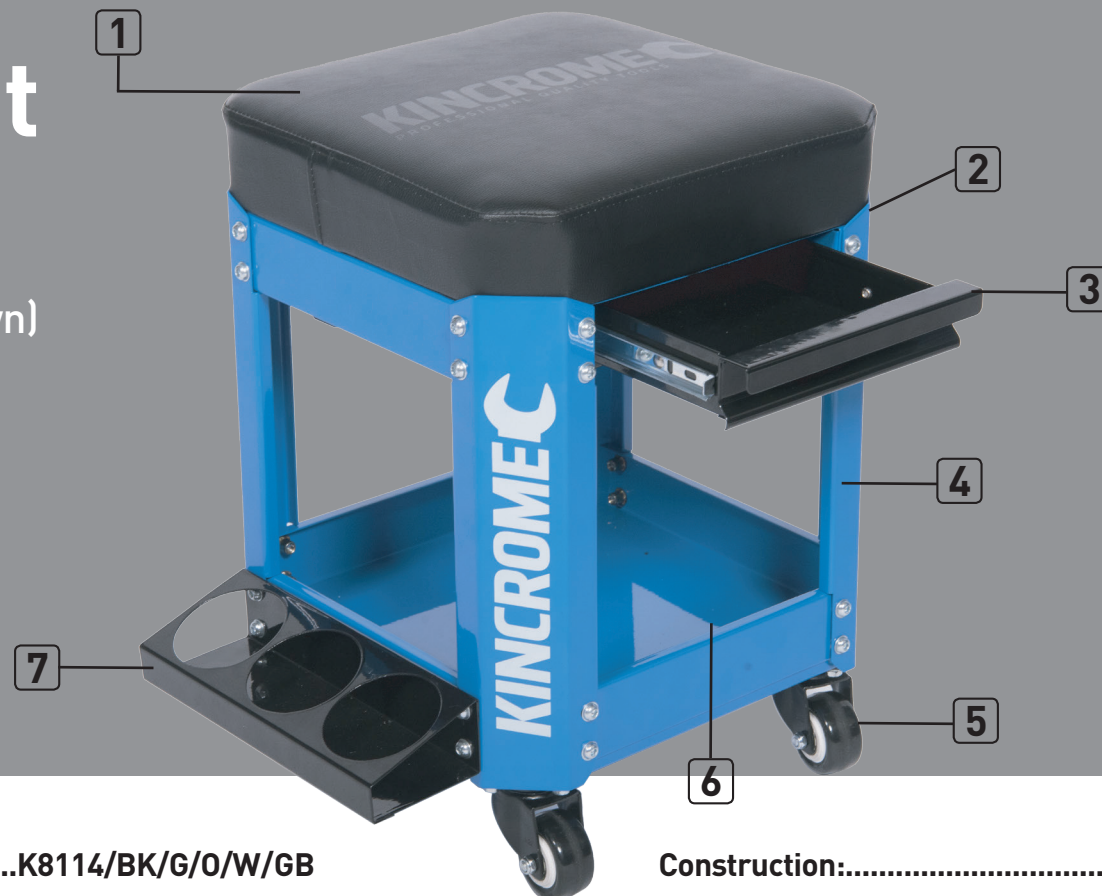


Workshop Creeper Seat

Know Your Product

1. Vinyl Padded Seat
2. Nut & Bolt Drawer (Not Shown)
3. Tool Drawer
4. Support Legs
5. Castors
6. Underseat Storage
7. Can Holder



K8114/BK/G/O/W

PRODUCT SPECIFICATIONS

Part No:.....K8114/BK/G/O/W/GB
 Weight Capacity:.....130kg
 Product Dimensions:.....300mm X 300mm X 425mm

Construction:.....Heavy Gauge Steel
 Tool Drawer Max Weight:.....30kg
 Product Weight:.....8kg

GENERAL SAFETY INFORMATION

1. WARNING! Only use the Kincrome Workshop Creeper Seat on flat, level surfaces.
2. Protect yourself and others by observing all safety information.
3. This instruction manual contains warnings and other important information. **PLEASE READ & KEEP FOR FUTURE REFERENCE**
4. The information in this manual has been carefully checked and is believed to be entirely reliable and consistent with the product described. However, no responsibility is assumed for inaccuracies, or liability arising out of the application and use of the equipment described.
5. Should the equipment be used in a manner not specified, the protection provided by the equipment may be impaired and the warranty voided.
6. The owner and/or operator are responsible for maintenance, maintaining all decals or warning labels while in use, maining the unit in good working order. Make sure that the operator understands all instructions. Safety information shall be emphasized and nderstood prior to usage. The stool shall be inspected per the operating instructions.
7. Keep work area clean & remove excess grease from tools, hands & clothing both before and after use.
8. The Kincrome Creeper seat is specifically designed to be used as a mobile workshop/garage/shed SEAT ONLY, and is not designed for any other purpose.
9. Using the Creeper for any other purpose could be dangerous, cause serious injury/death to yourself & others.
10. NEVER stand on, lie on or operate the Creeper seat at any speed, on rough/exposed uneven surfaces, while intoxicated or under the influence of any drug or medication that can make your judgment impaired at any time.
11. Beware of imperfections & cracks on the work floor.

UNPACKING

1. Unpack all components from the box.
2. When unpacking the Kincrome Workshop Creeper Seat, carefully inspect it for any damage that may have occurred during transit or storage. Check for any dents, loose, missing or damaged parts before use.
3. Ensure all packaging material is disposed of as per your local council guide lines.

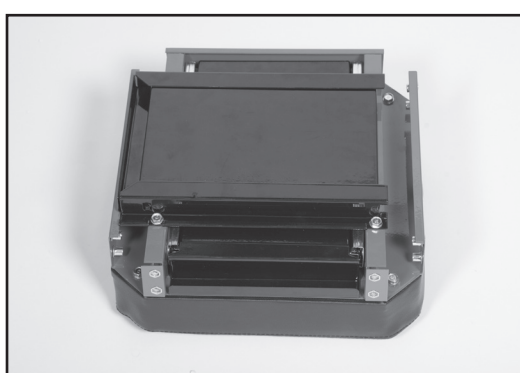
ASSEMBLY

The Kincrome Workshop Creeper Seat comes flat packed and requires assembly. Follow the instructions below to assemble your Kincrome Workshop Creeper Seat.

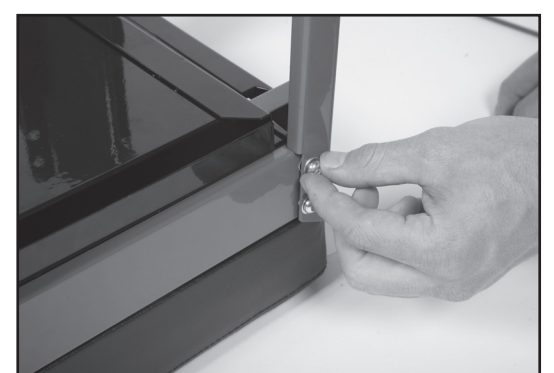
1. Layout all the contents and ensure there are no missing/damaged parts (Fig 1).
2. Lay the Vinyl Padded Seat (1) on a clean flat surface, with the drawers (2 & 3) facing up (Fig 2).
3. Using one of the Support Legs (4) align the 4 holes in the Support Leg (4) with the holes of the Vinyl Padded Seat (1). Insert the supplied bolts, spring and flat washer and hand tighten.
4. Assemble the remaining three Support Legs (4) to the Vinyl Padded Seat (1) hand tightening the bolts (leave all bolts loose until completely assembled) (Fig 4).
5. Turnover the Underseat Storage (6), so the storage cavity is facing the floor (Fig 5) and align the holes with the thread on the Support Legs (4) (Fig 6).



(Fig 1)



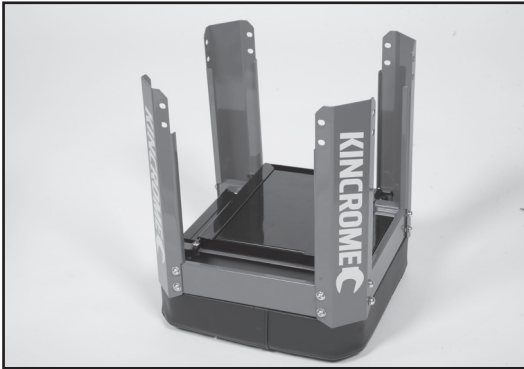
(Fig 2)



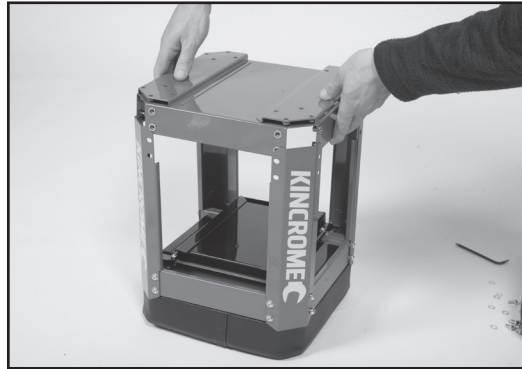
(Fig 3)

ASSEMBLY (Continued)

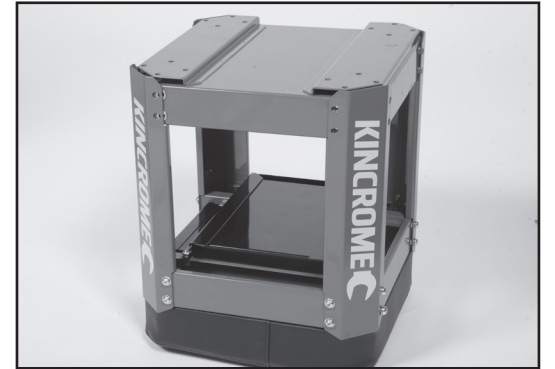
6. Assemble the Underseat Storage (6) to the Support Legs (4) with the supplied bolts, spring and flat washers, hand tightening only (Fig 7).
7. Align a Castor (5) with the threads located on the bottom of the Underseat Storage (6), assemble with the supplied bolt, spring washer and washer, using the supplied 4mm Hex Key, repeat for all Castors (5) (Fig 8).
8. Assemble the Can Holder (7) on an opposite side of one of the drawers. Remove 4 bolts previously installed (Fig 9) and align the can holder to the side of the Workshop Creeper Seat.
9. Reinstall the 4 bolts, spring washer and washer removed in the previous step, to secure the Can Holder (7) to the Workshop Creeper Seat (Fig 10).
10. Turn the Kincrome Workshop Creeper Seat over onto it's wheels to ensure everything is correctly aligned, then tighten all bolts using the supplied 4mm Hex Key (Fig 11).
11. Your Kincrome Workshop Creeper Seat is now ready for use.
12. Periodically check all bolts are tight on your stool.



(Fig 4)



(Fig 5)



(Fig 6)



(Fig 7)



(Fig8)



(Fig 9)



(Fig 10)



(Fig 11)



(Fig 12)

Maintenance & Storage

The K8114 Kincrome Creeper Seat should be stored in a cool and dry area, out of reach of children.

- a) Little maintenance is required for this product. Wipe clean as needed; only use a mild soap to clean and dry immediately.
- b) Check to ensure all fasteners are tight periodically.

Spare Parts

Spare parts are available for the K8114 Kincrome Workshop Creeper Seat.

Part No.	Description
K8114-1	Fastener Pack
K8114-2	4 X Swivel Castors
K8114-3	Can Holder

Australian Office Contact Details



Phone: 1300 657 528



Fax: 1300 556 005



Email: enquiries@kincrome.com.au



Website: www.kincrome.com.au

UK Office Contact Details



Mail: Kincrome UK Ltd PO Box 646 Eastleigh SO50 ONA



Email: enquiries@kincrome.co.uk



Website: www.kincrome.co.uk



Warranty given by Kincrome Tools & Equipment Pty Ltd of 3 Lakeview Drive, Caribbean Park, Scoresby, Victoria, Australia (Tel +61 3 9730 7100) If this product has materials or workmanship defects (other than defects caused by abnormal or non warranted use) you can, at your cost, send the product to place of purchase, an authorised Kincrome service agent or one of Kincromes addresses for repair or replacement. Your rights under this warranty are in addition to any other rights you have under the Australian, United Kingdom & Ireland Consumer Law or other applicable laws. Our goods come with guarantees that cannot be excluded under the Australian, United Kingdom & Ireland Consumer Law. You are entitled to a replacement or refund for a major failure and compensation for any other reasonably foreseeable loss or damage. You are also entitled to have the goods repaired or replaced if the goods fail to be of acceptable quality and the failure does not amount to a major failure. For further details please visit www.kincrome.com.au or call us. Due to minor changes in designor manufacture, the product you purchase may sometimes differ from the one shown on the packaging.