



## Assembly Instructions

Mobile storage rack

MADE IN CHINA

Model No.: K7107

Dimension: 85.5\*39\*169.5cm

Tool Required: Rubber Mallet

## Safety Rules and Instructions

1. The mobile storage rack must be assembled and used on a level surface.
2. Evenly distribute the weight of load on each shelf, place the heaviest items on the bottom shelf.

**Do not overload.**

**3. DO NOT STAND ON OR USE THE UNIT AS A LADDER.**

4. Should there ever be a need to change the level of the shelf, be sure to disassemble and reassemble one level at a time.

5. Use a mallet to drive the rivet to the bottom of slots on the post. Hit the beam close to the connection.

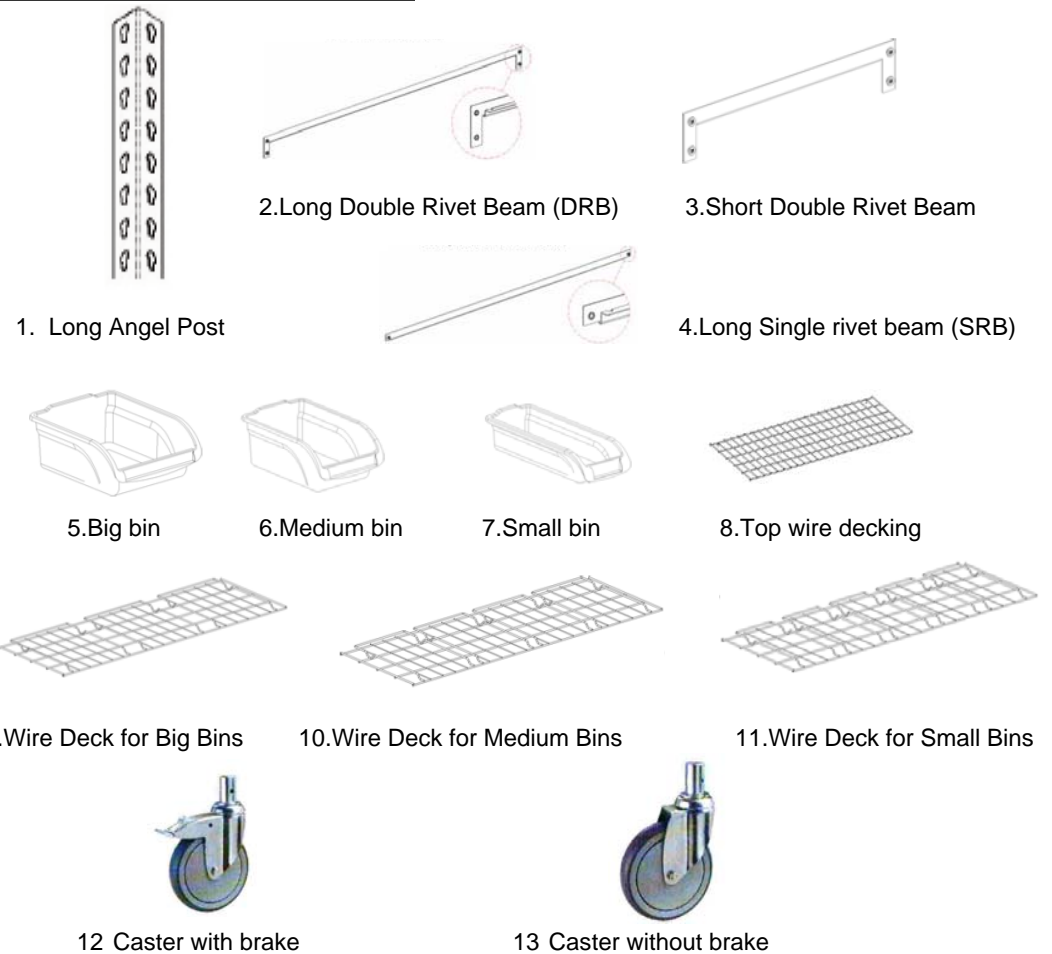
6. Be sure that the rivets seat at the bottom of the slot.

7. To facilitate assembly we recommend having two persons assemble the rack.

**MADE IN CHINA**

**Kincrome Australia Pty Ltd**

## PARTS OVERVIEW



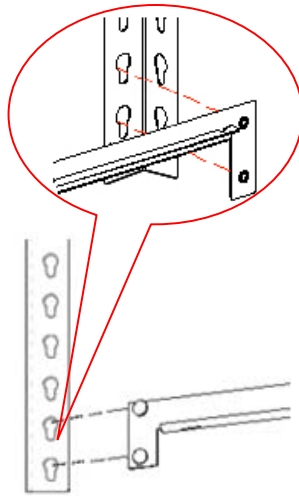
## Contents

Item	Discription	Q'ty	Item	Discription	Q'ty
1	Angel post	4	8	Top wire decking	1
2	Long Double rivet beam	6	9	Wire decking for big bins	3
3	Short Double rivet beam	10	10	Wire Deck for Medium Bins	3
4	Long Single rivet beam	14	11	Wire Deck for Small Bins	3
5	Big bin	9	12	Caster with brake	2
6	Medium bin	12	13	Caster without brake	2
7	Small bin	15			

# Assembly Instructions

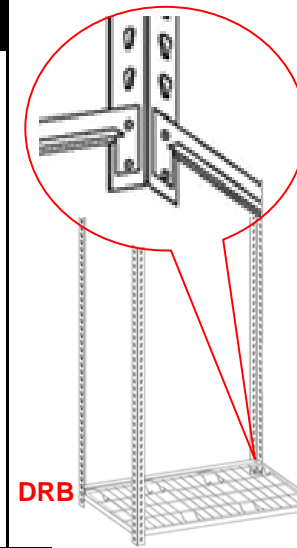
## Tips

1. The posts are directional; the slot's tapered end must face downward.
2. Tap the beams close to the connection to assure the rivets seat at the bottom of the slot.
3. When assembling the beams the slot of the beam must face up to assure that the decking sits leveled.



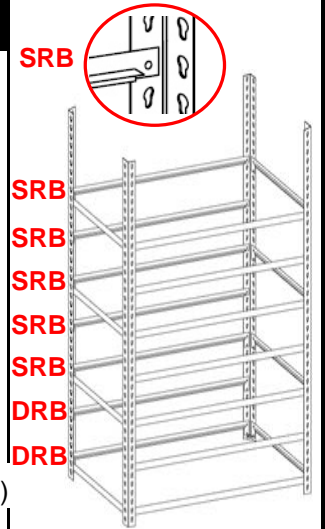
## Step 1

Assemble two long posts(1) and two short Double Rivet Beam(3). Use the last slot from the bottom of the post. Be sure the slot of the beam is facing up. Tap the beams close to the connection and assure the rivets are seated at the bottom of the slot. Laying the big bin wire decking (9) on the bottom level.



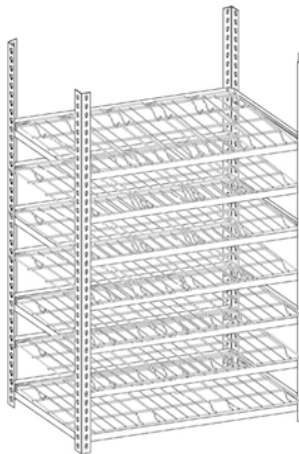
## Step 2

Repeat step 1 to continue the assembly until level 7, Each level is 4 slots higher than the last level. Use long double rivet beam(2) on the bottom two level, and long single rivet beam(4) on the other levels. And only level 1, 3, 5, 7 need to add the short beams(3) to enhance the construction.



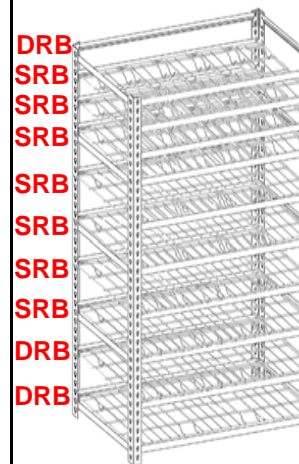
## Step 3

It is better to put the wire decking on the desired place before assemble the higher level. The big bin wire decking(9) suit for the bottom three level, the medium bin wire decking(10) suit for the middle three level.



## Step 4

Continue the assembly with two long single rivet beams (4), The level 8 is two slots higher than level 7. From the level 7, put the small bin wire decking(11) on the beams. Repeat this step until the top level. Add the short beam(3) on the top level.



## Step 5

Screw the four casters(12) (13) at the bottom of the four posts. Add the top wire decking(8) on the rack. Then put the three kinds of bins on the desired place.

