



TOOL TROLLEY

12 DRAWER EXTRA WIDE

K7542

Operation Manual

Caution: Take Safety Precautions When Using Your Toolbox



Do not open more than one drawer at a time.



Do not step on drawers.



Do not let children near the Toolbox.



Do not separate Chest from Trolley.



Do not exceed Drawer Load Limit



Not suitable for mounting in Vehicles



Lock drawers and lid before moving the Toolbox.

IMPORTANT:

THIS OPERATING MANUAL CONTAINS IMPORTANT SAFETY INFORMATION. READ CAREFULLY AND UNDERSTAND ALL INFORMATION BEFORE OPERATING TOOL TROLLEY. SAVE THIS MANUAL FOR FUTURE USE



Parts List



TOOL TROLLEY SPECIFICATIONS

Overall	Width	Depth	Height
(with castors)	1059mm	475mm	950mm
(without castors)	1059mm	475mm	825mm
Wide Drawers (Shallow)	867mm	397mm	65mm
Medium Drawers (Shallow)	545mm	397mm	52mm
Medium Drawers (Deep)	545mm	397mm	85mm
Small Drawers (Shallow)	257mm	397mm	52mm
Small Drawers (Deep)	257mm	397mm	160mm
Side Tray	175mm	300mm	12mm
Castor Size:	125mm x 50mm (5" x 2") x 2 Locking		
Weight	85Kg		

Assembly Instructions



Keys x 2



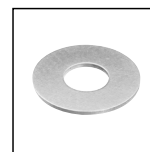
Trolley Handle x 1



8 x Hex Bolts for Push Handle



Power Handle x 1



Washers x 16



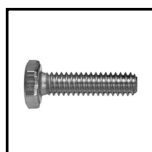
Spring Washers x 16



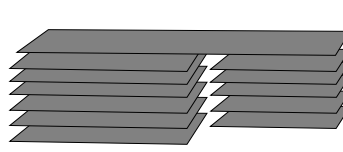
Non-Locking Swivel Castors (2)



Locking Swivel Castors (2)



13mm x 16 Bolts (16) for Castors



12 x EVA Liners

TOOLS & ASSISTANCE NEEDED



2 People Lift

Castor



13mm Spanner

Handle

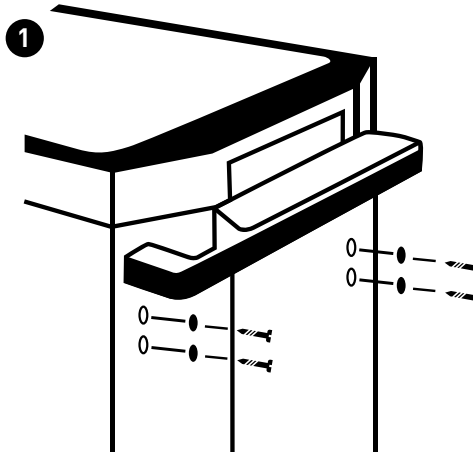


5mm Hex Key

Assembly Instructions

1 Handle Installing

- Position the trolley side handle behind the holes on the trolley.
- Attach with (4) bolts, and tighten with a 5mm Hex Key.

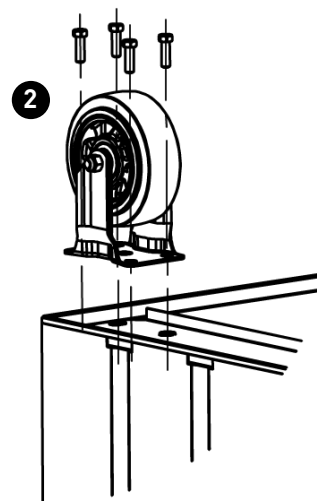


2 Castor Installing (If applicable)

- Be sure the drawers are locked and lay the trolley on its side.
- Secure castors to the unit using the 13mm bolts provided.
- Tighten with a 13mm Spanner.
- Repeat this process for the castors on the opposite of the trolley.
- Return the trolley to its upright position.

Caution: Do not over tighten the bolts.

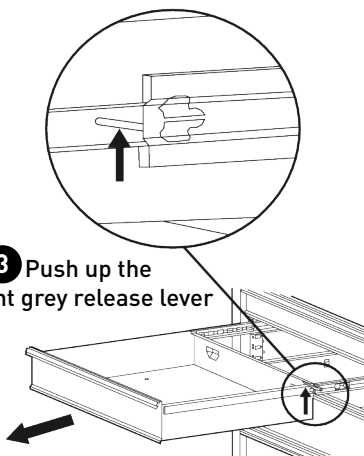
Caution: Both locking castors must be fitted to front of trolley.



3 Removing the Drawers

- Fully extend the empty drawer.
- Push up the right grey release lever while pushing down the left grey release lever.
- Pull the drawer outward until it is released from the drawer slide.

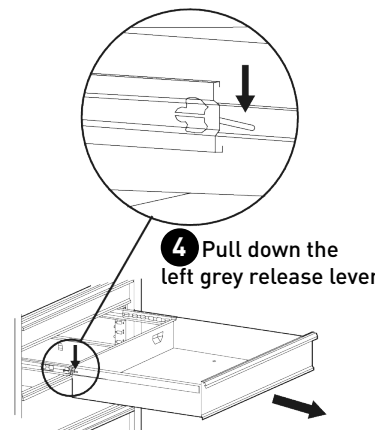
3 Push up the right grey release lever



4 Re-Inserting The Drawers

- Extend the drawer slides.
- Insert the brackets on each side of the drawer into the slots on the slides, being careful that they are properly positioned.
- Once properly inserted, completely close the drawer to set the slides in their proper positions.

4 Pull down the left grey release lever



MAINTENANCE

- Periodically tighten all hardware
- Periodically lubricate castors
- Lubricate the slides twice a year
- Lubricate the lock with graphite annually
- Use a damp Microfibre cloth to clean all surfaces



TOOL TROLLEY

12 DRAWER EXTRA WIDE

K7542

Replacement Parts



REPLACEMENT PARTS

ITEM	PART NO.	DESCRIPTION	QUANTITY
1	K7778	Lock & Key	1
2	K7779	Key Only (Specify Key Number)	1
3	K7542-4	Plastic Trolley Top	1
4	K7759-5	Trolley Handle (1)	1
5	K7741	Power Handle	1

ITEM	PART NO.	DESCRIPTION	QUANTITY
6	K7747-16	Ball Bearing Slide Set (2)	12
7	K7542-1	Swivel Castor (1)	2
8	K7542-2	Swivel Castor (Brake) (1)	2
9	K7759-17	Castor Nut & Bolt	1
10	K7542-12	Eva Mat Pack (12)	12

KINCROME
TOOLS + EQUIPMENT™

National Head Office
National Distribution and Showroom
3 Lakeview Dve, Caribbean Business Park
Scoresby Victoria 3179 Australia
ABN 41 007 185 006

Administration
T +61 3 9730 7100 F + 61 3 9730 7199
E enquiries@kincrome.com.au
W kincrome.com.au

Customer Service Centre
T 1300 657 528 F 1300 556 005

Made to Kincrome Tools & Equipment Pty Ltd Global specifications and quality standards in China
Kincrome UK Ltd PO Box 646 EASTLEIGH S050 0NA

Australia & Global	UK & EU
www.kincrome.com.au	www.kincrome.co.uk
enquiries@kincrome.com.au	enquiries@kincrome.co.uk