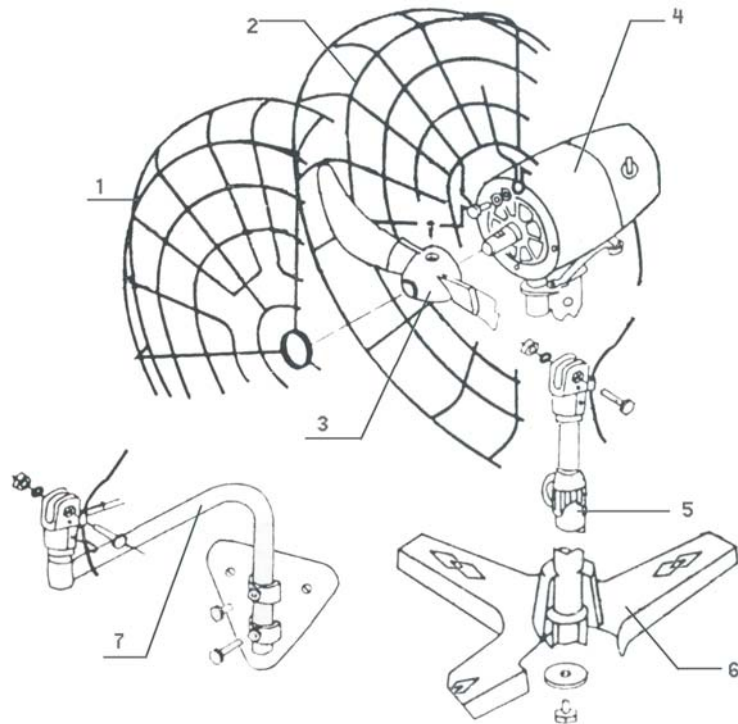




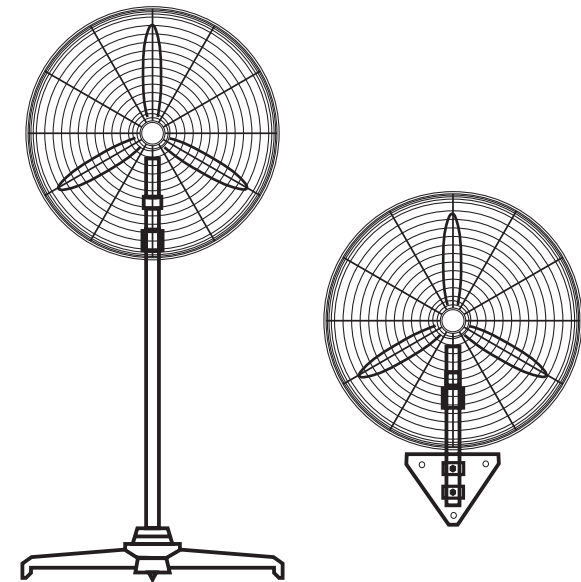
INDUSTRIAL ELECTRIC FAN

PART NO.: K13006 K13007



1.FRONT GRILL 2.BACK GRILL 3.BLADE 4.MOTOR

5.PILLAR 6.BASE 7.WALL SUPPORT



INSTRUCTION MANUAL

WARNING:**CAUTION:****OPERATING INSTRUCTION:**

WHEN USING ELECTRIC PRODUCTS, BASIC SAFETY PRECAUTIONS SHOULD ALWAYS BE FOLLOWED TO REDUCE THE RISK OF FIRE, ELECTRIC SHOCK AND PERSONAL INJURY, ETC.

1. CONSIDER WORK AREA ENVIRONMENT

DON'T use fan in damp or wet locations. DON'T use fan in presence of flammable liquids or gases and high temperature. DON'T restrict air intake. DON'T use fan near window curtains or unstable areas.

2. DON'T ABUSE CORD

Never pull fan by cord or yank it to disconnect from receptacle. Keep cord away from heat, oil, and sharp edges.

3. DISCONNECT FANS

Disconnect fan when not in use, before servicing, and when attaching accessories.

4. INSPECT FOR DAMAGE

Inspect for damage before using fan. Determine before use if it will operate properly. Check for alignment or binding of the motor, blades installed firmly on the motor. Make sure the front fan guard has been fixed to the back one. Inspect cord periodically for damage. Check the switch by turning fan on and off while unit is plugged in. If any of the above are found to be broken or inoperative, return the fan for repair or replacement of damaged parts.

5. MIND THE CHILDREN

Children are not allowed to approach the fan, stick fingers or any other objects such as screwdrivers into the fan guards where air discharges or takes in when the fan is running.

6. REPLACEMENT PARTS

When servicing, use only genuine parts supplied by the manufacturers to replace the damaged ones. Replacements must be done by qualified electricians.

OPERATING INSTRUCTION:

1. Make sure the voltage accords with 240v, 50Hz.
2. Check the switch IS IN THE '0' POSITION.
3. Hold up the head of the fan to avoid it falling down before adjusting it upward or downward to a satisfactory position by loosening and tightening up the changing bolt.
4. Insert the plug into the electric socket.
5. Turn on the switch to 1, 2 or 3 to choose the speed: 1 low, 2 medium, 3 high, 0 stop.
6. Disconnect the fan with electricity when not in use.

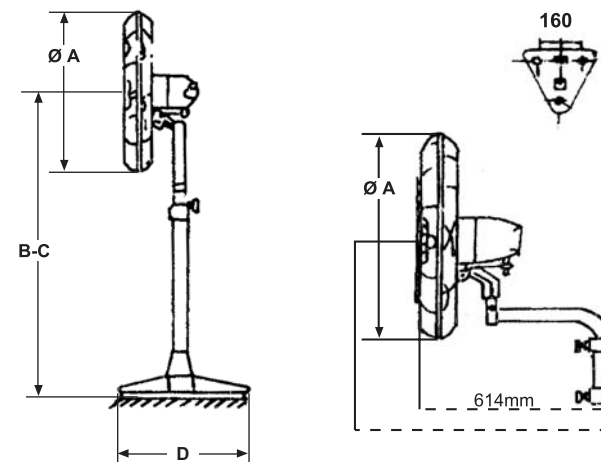
MAINTAIN FAN

To keep fan, motor, blades and fan guards clean in a safe way, please follow the steps below:

- A) Unplug fan and loosen the clips on the fan guards before using dry cloth to keep the fan away from dust.
- B) Gently wipe the blades to avoid them being damaged, resulting poor operation.
- C) Ensure all the parts have been fastened after reassembling.
- D) Keep fan a trial running for 5 minutes to confirm its normality. Should anything of the fan be found abnormal after cleaning, please stop immediately to have it checked and fixed a service agent. Repairs should only be conducted by a qualified technician.

GREASE RENEWED

The used grease should be renewed by qualified technician after 2000 hours' running.

**INSTALLATION:
DIMENSION**

| SPEC | mm |
|------|-----------|
| Φ A | 830 |
| B~C | 1650~2000 |
| D | 650 |

Please refer the assembling diagram to install stand fan