

## LED LIGHT BAR 3W CREE



### GENERAL SAFETY INFORMATION

1. This service instruction sheet contains important warnings and other information. **READ & KEEP FOR REFERENCE**
2. This product is designed and intended for use only with 10-30 Volts DC (ELV-Extra Low Voltage) such as that in a motor vehicle or other plant and machinery. Applying voltages higher or lower than or at any voltage in AC (alternating current) form will result in damage to the light bar and possible harm or injury to the user.
3. Before wiring up this Light, Ensure the battery and any other power source to the vehicle is disconnected or isolated to prevent electric shock.
4. Do not look directly into the light when it is on. It may result in eye damage.
5. **PLEASE CONTACT YOUR LOCAL REGULATORY BODIES FOR LEGALITIES ON THE ROAD.**
6. Installation of this item must be carried out by a competent person who has acquired the skills through training, experience or a combination of these.
7. Failure to follow any part of these pages may result in premature failure of the light bar and possible damage or injury to property or persons.
8. The information in this manual has been carefully checked and is believed to be entirely reliable and consistent with the product described. However, no responsibility is assumed for inaccuracies, or for liability arising out of the application and use of the equipment described.
9. Should the equipment be used in a manner not specified, the protection provided by the equipment may be impaired and the warranty voided.

### UNPACKING

1. Unpack all the components from the box.  
When unpacking the LED Bar light, carefully inspect for any damage that may have occurred during transit or storage.  
Check for tears, loose parts, missing parts or damaged parts.
2. Ensure all packaging material are disposed of as per your local council guide lines.

### SPECIFICATION:

Model No.	K10500	K10501	K10502
LED Power	180 Watts	234 Watts	306 Watts
Mounting Bracket	Adjustable Brackets x 3	Adjustable Brackets x3	Adjustable Brackets x 3
Ingress Protection Rating	IP67	IP67	IP67
No. 3W Cree LEDs	60	78	102
Colour Temperature	6000k	6000k	6000k
Housing Material	Diecast Aluminium	Diecast Aluminium	Diecast Aluminium
Lens Material	Polycarbonate	Polycarbonate	Polycarbonate
Beam	Spot 20°	Flood 40°	Flood 40° /Spot 20°
Life Span (hours)	30,000+	30,000+	30,000+
Light Output (Lumens)	15,300	19,890	26,010
Size	32 Inch 810x85x75mm	41 Inch 1040x85x75mm	50 Inch 1350x85x75mm

### ASSEMBLY OF ADJUSTABLE MOUNTS

1. Turn the light bar upside down so you can see the slide track (fig 1).
2. One by one insert all the slider brackets into the track and slide each bracket along the track before inserting the next bracket (fig 2).
3. Position brackets where required and fasten with the provided hex screws (fig 3).
4. Insert eyelet bolt into the centre slot of the slider bracket (fig 4).
5. Feed the fastening bolt through the hole of the sliding bracket and eyelet bolt, assemble and tighten the spring washer and nut (do not over tighten) (fig 5).
6. Attach the adjustable locking plate at the desired position then fasten with spring washer and nut (fig 6).
7. Tighten all nuts, and mount where desired.



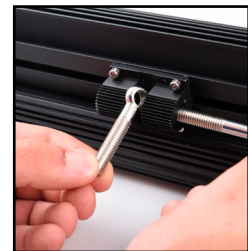
(fig 1)



(fig 2)



(fig 3)



(fig 4)

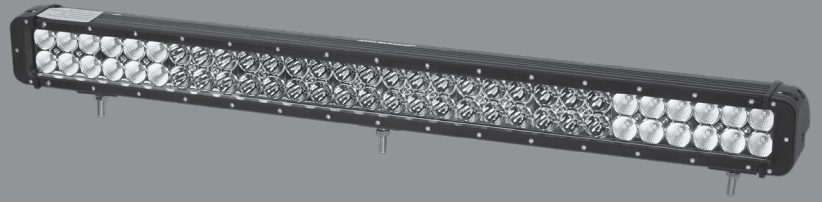


(fig 5)



(fig 6)

## LED LIGHT BAR 3W CREE



### VEHICLE MOUNTING

**WARNING:** Contact your local State and Territory Registration Authorities for regulations and requirements regarding the fitment of LED light Bars.

Constraints remain on the fitment of LED light bars, so any LED light bar that is fitted must be installed in alignment with the following requirements (also contact your local RTA authority):

Before beginning, take some time to determine how and where you will fit the light bar to your vehicle.

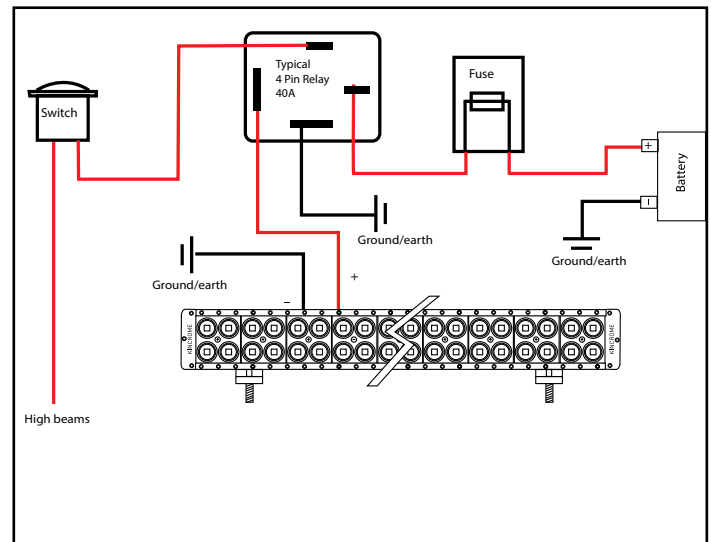
1. The lamps should, as far as is possible, be installed symmetrically in pairs to the front of the vehicle.
2. If lamps are not fitted as pairs (e.g. one, three etc), they must be fitted to the front of the vehicle and as close as possible to the centre of the vehicle.
3. A maximum of four driving lamps (including LED light bars) can be fitted to a vehicle in addition to the vehicle's main beam headlamps.
4. The lamp/s must be installed in a way that the light produced does not cause the driver of the vehicle discomfort either directly or by reflection.
5. The lamp/s must only come on when the main-beam (high beam) headlamps are used, and must automatically turn off when the main-beam headlamps are turned off.
6. The lamps must not obstruct the driver's view of the road.
7. Cannot be used to dazzle other road users.

### WIRING INSTRUCTIONS

LED Light Bars must be wired in such a way that they only switch on with the main beam (high beam) head light.

It is recommended you purchase a pre-made wiring kit from an automotive store.

**Caution:** When creating your own wiring loom/harness, ensure that adequate sized wiring for the distance of the cable run is used. Failure to use correct sized wiring for the current draw and voltage drop may result in damage to the light bar through overheating or fire.



### WARRANTY

Warranty given by Kincrome Australia Pty Ltd of 3 Lakeview Drive, Caribbean Park, Scoresby, Victoria (Tel 1300 657 528). The applicable warranty period (12 months) commences on the date that the product is purchased. If this product has materials or workmanship defects (other than defects caused by abnormal or non warranted use) you can, at your cost, send the product to place of purchase, an authorised Kincrome service agent or one of Kincromes addresses for repair or replacement. Your rights under this warranty are in addition to any other rights you have under the Australian Consumer Law or other applicable laws.

Our goods come with guarantees that cannot be excluded under the Australian Consumer Law. You are entitled to a replacement or refund for a major failure and compensation for any other reasonably foreseeable loss or damage. You are also entitled to have the goods repaired or replaced if the goods fail to be of acceptable quality and the failure does not amount to a major failure. For further details please visit [www.kincrome.com.au](http://www.kincrome.com.au) or call us. Due to minor changes in design or manufacture, the product you purchase may sometimes differ from the one shown on the packaging.

### WHAT IS NOT COVERED

This warranty does not cover fading or discoloration caused by exposure to sunlight or chemicals such as ammonia, household bleach, or any cleaning material that contains abrasive substances.

Kincrome does not cover the cost for removal and/or reinstallation of any kind including any damaged cause during or after fitment to vehicle. This warranty is void and inapplicable if Kincrome deems that the product was abused or misused; including but not limited to damage caused by accident, mishandling, improper installation, negligence, normal wear and tear, excessive water or heat damage, freight damage or products that have been altered in any way.

The warranty is not transferable and will not apply to products purchased from unauthorized dealers. Kincrome is not responsible for any damages to a consumer's vehicle or person from a product failure. The warranty is void if it is deemed the product was installed or used improperly.