



Parts Manual

Mfg. No: 030654-00
3,000 Watt Briggs & Stratton Inverter



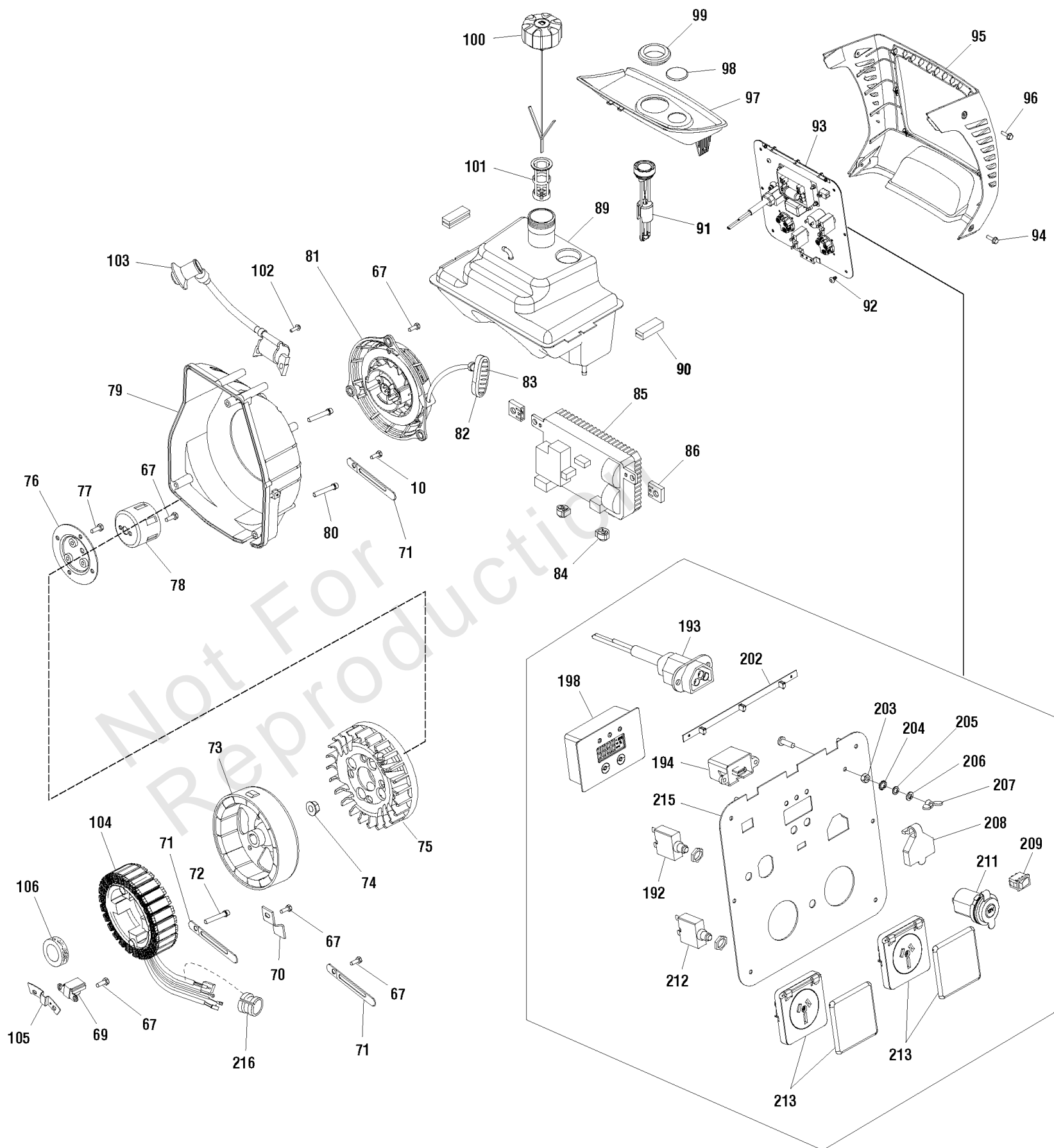
Model Components	Page
Alternator & Control Panel (80012940p1).....	4
Engine (80012940p3).....	8
Main Unit (80012940p2).....	12
Torque Specification Chart.....	16

Not For
Reproduction

Alternator & Control Panel (80012940p1)

Note: Unless noted otherwise, use the standard torque specifications

Mfg. No: 030654-00



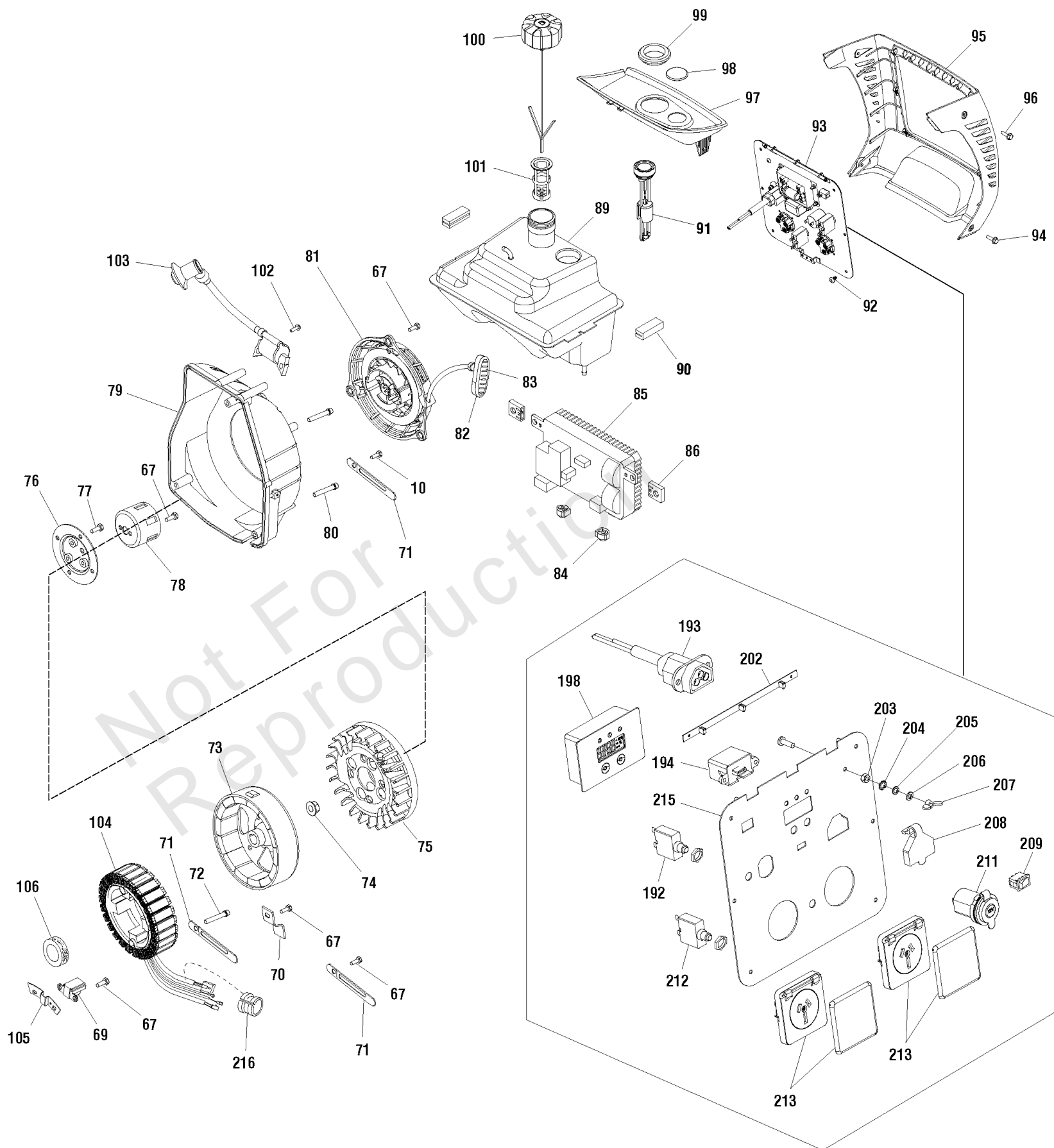
Alternator & Control Panel (80012940p1)

REF NO	PART NO	QTY	DESCRIPTION
10			SCREW
67			BOLT-M6 x 12
69	705457		TRIGGER-IGNITION
70			BRACKET
71			BRACKET
72			SCREW-M6 x 60
73	705458		ROTOR
74			NUT, FLANGE M14
75	705459		FAN
76			TERMINAL
77			BOLT-M6 x 16
78	705466		CUP-FLYWHEEL
79			COVER-FAN
80			BOLT-M6 x 55
81	705465		STARTER-REWIND
82	311414GS		GRIP
83			INSERT-GRIP
84			MOUNT-VIBRATION
85	705462		INVERTER
86			MOUNT-VIBRATION
89	707176		TANK-FUEL
90	319941GS		MOUNT-VIBRATION
91	319933GS		GAUGE
92			SCREW
93	319947GS		PANEL-CONTROL
94			SCREW-M5 x 30
95	319927GS		COVER-PANEL
96			SCREW-M6 x 56
97	319929GS		TRAY-FUEL
98	706134		PLUG-SIGHT
99	705490		GROMMET-FUEL
100	317134GS		CAP-FUEL
101	317441GS		FILTER-FILLER NECK
102			SCREW
103	705463		COIL-IGNITION
104	705464		STATOR
105			BRACKET
106			SEAL-OIL
192	311444GS		BREAKER-CIRCUIT
193	705488		PORT-PARALLEL
194	319946GS		PORT-USB
198	705482		MODULE
202	319945GS		PCB-LED
203	207743GS		NUT
204	91719GS		WASHER
205	207806GS		WASHER
206	207805GS		WASHER
207	187424GS		NUT-WING
208	705478		COVER-PORT
209	311442GS		SWITCH
211	314531GS		OUTLET-DC

Alternator & Control Panel (80012940p1)

Note: Unless noted otherwise, use the standard torque specifications

Mfg. No: 030654-00



Alternator & Control Panel (80012940p1)

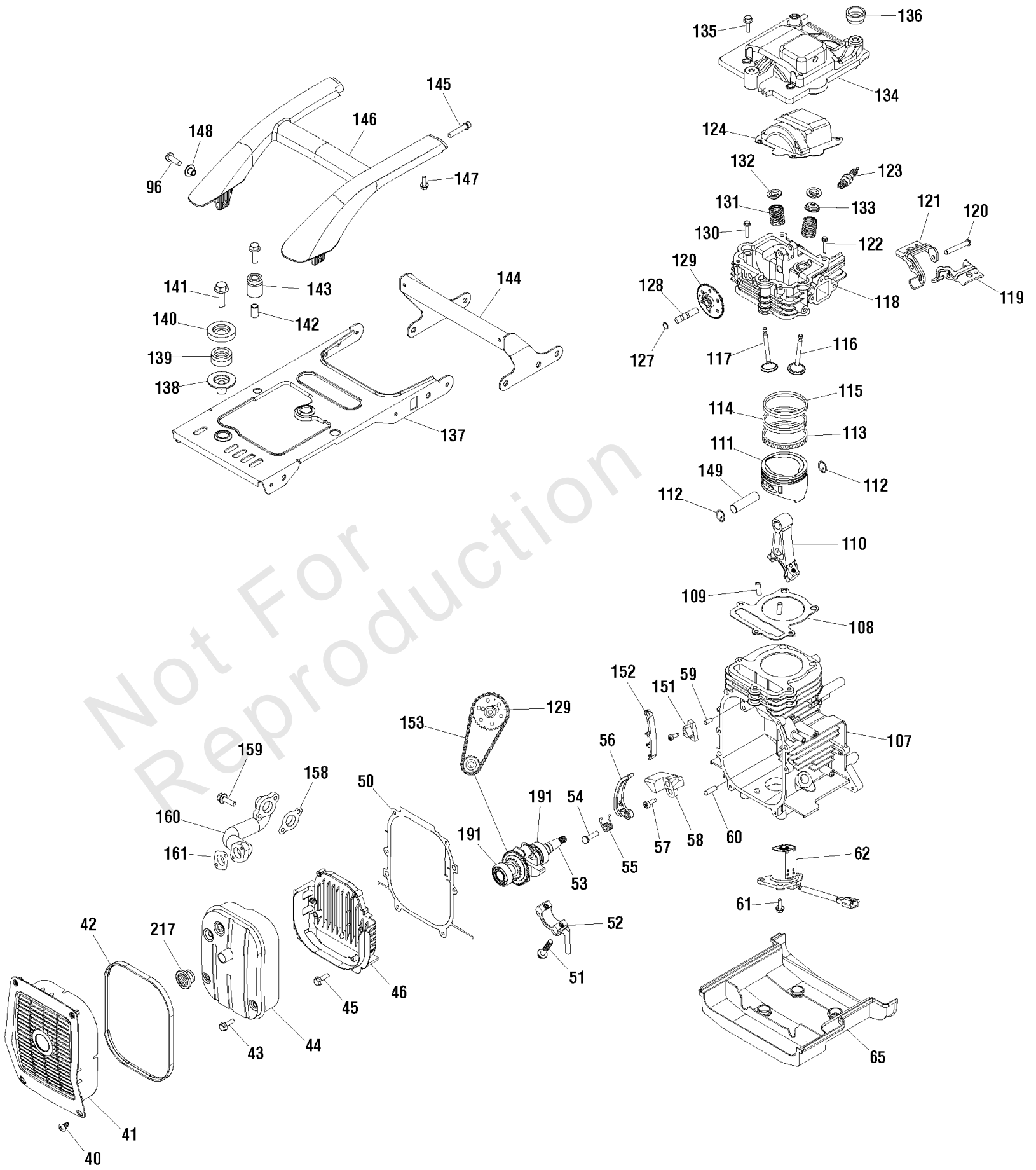
REF NO	PART NO	QTY	DESCRIPTION
212	707170		BREAKER-CIRCUIT
213	314532GS		OUTLET
215	707179		PANEL-CONTROL
216			COVER-RUBBER
--	187876GS		CABLE-BTTRY CHARGE -(Not Illustrated)
--	706357		FUNNEL -(Not Illustrated)
--	100005GS		OIL -(Not Illustrated)
--	703574		KIT-TOOL -(Not Illustrated)
--	706139		JET-MAIN, High Altitude, 5000 ft -(Optional Accessory - Not Included)

Not For
Reproduction

Engine (80012940p3)

Note: Unless noted otherwise, use the standard torque specifications

Mfg. No: 030654-00



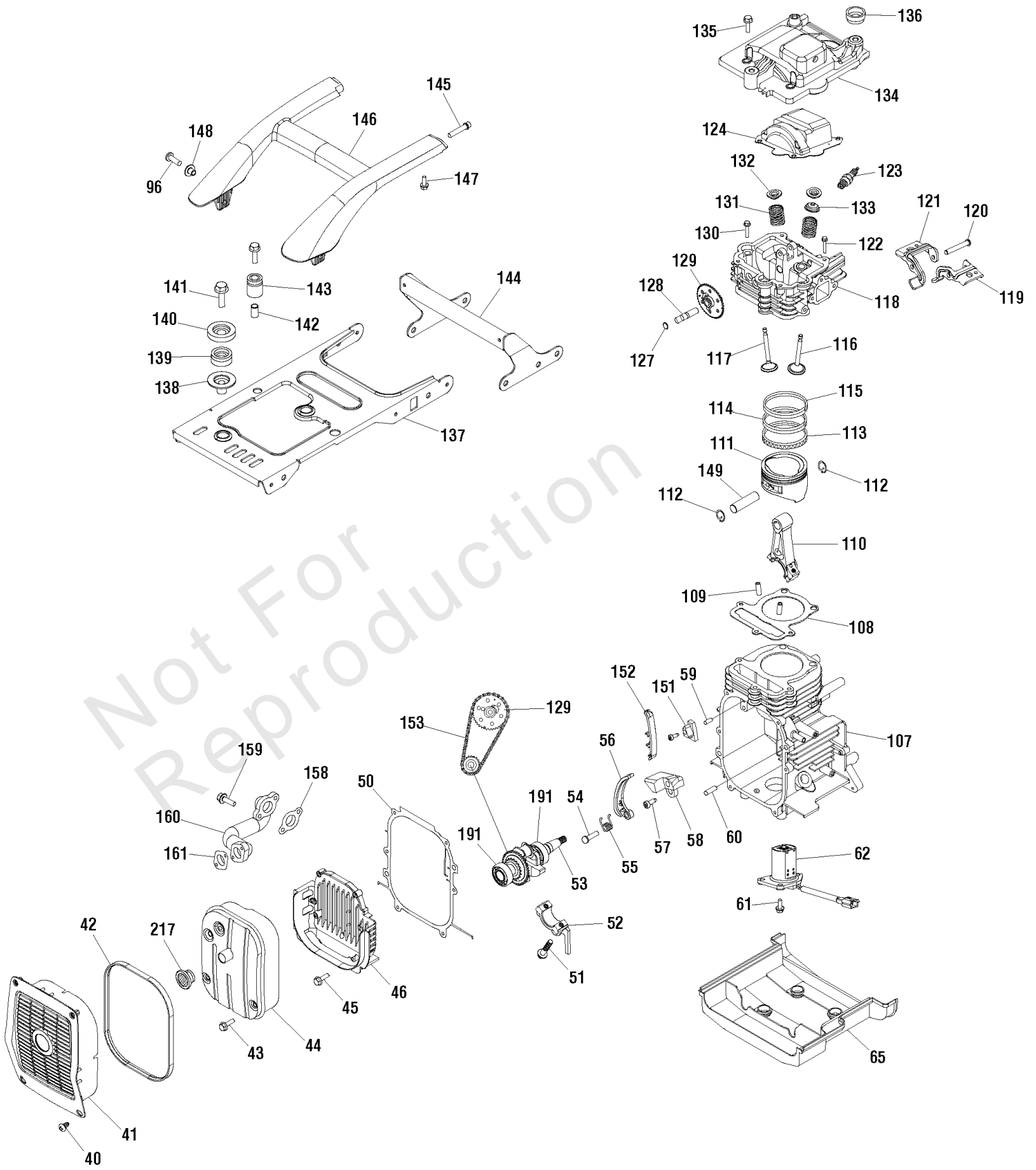
Engine (80012940p3)

REF NO	PART NO	QTY	DESCRIPTION
40			SCREW
41	319930GS		GUARD-MUFFLER
42	705962		GASKET
43			BOLT-M6 x 75
44			MUFFLER
45			BOLT-M6 x 30
46			COVER-CRANKCASE
50	705963		GASKET-CRANKCASE
51			ROD
52			COVER
53			CRANKSHAFT
54			PIN
55			SPRING
56			ARM-TENSION
57			SCREW
58			BRACKET
59			PIN
60			PIN
61			BOLT-M5 x 14
62	705964		SENSOR-OIL
65			COVER
96			SCREW
107			CRANKCASE
108			GASKET
109			PIN
110			ROD
111			PISTON
112			RETAINER-PIN
113			RING
114			RING
115			RING
116			VALVE-INTAKE
117			VALVE-EXHAUST
118			CYLINDER HEAD
119			ARM-INTAKE VALVE
120			PIN
121			ARM-EXHAUST VALVE
122			BOLT-M8 x 50
123	705455		SPARK PLUG
124			BLOCK
127			O-RING
128			PIN-SHAFT
129			CAM-ASSEMBLY
130			BOLT-M8 x 70
131			SPRING
132			SEAT-VALVE
133			SEAL-VALVE OIL
134	705456		COVER-CYLINDER
135			BOLT-M6 x 25
136			MOUNT-VIBRATION
137	319943GS		BRACEKT

Engine (80012940p3)

Note: Unless noted otherwise, use the standard torque specifications

Mfg. No: 030654-00



Engine (80012940p3)

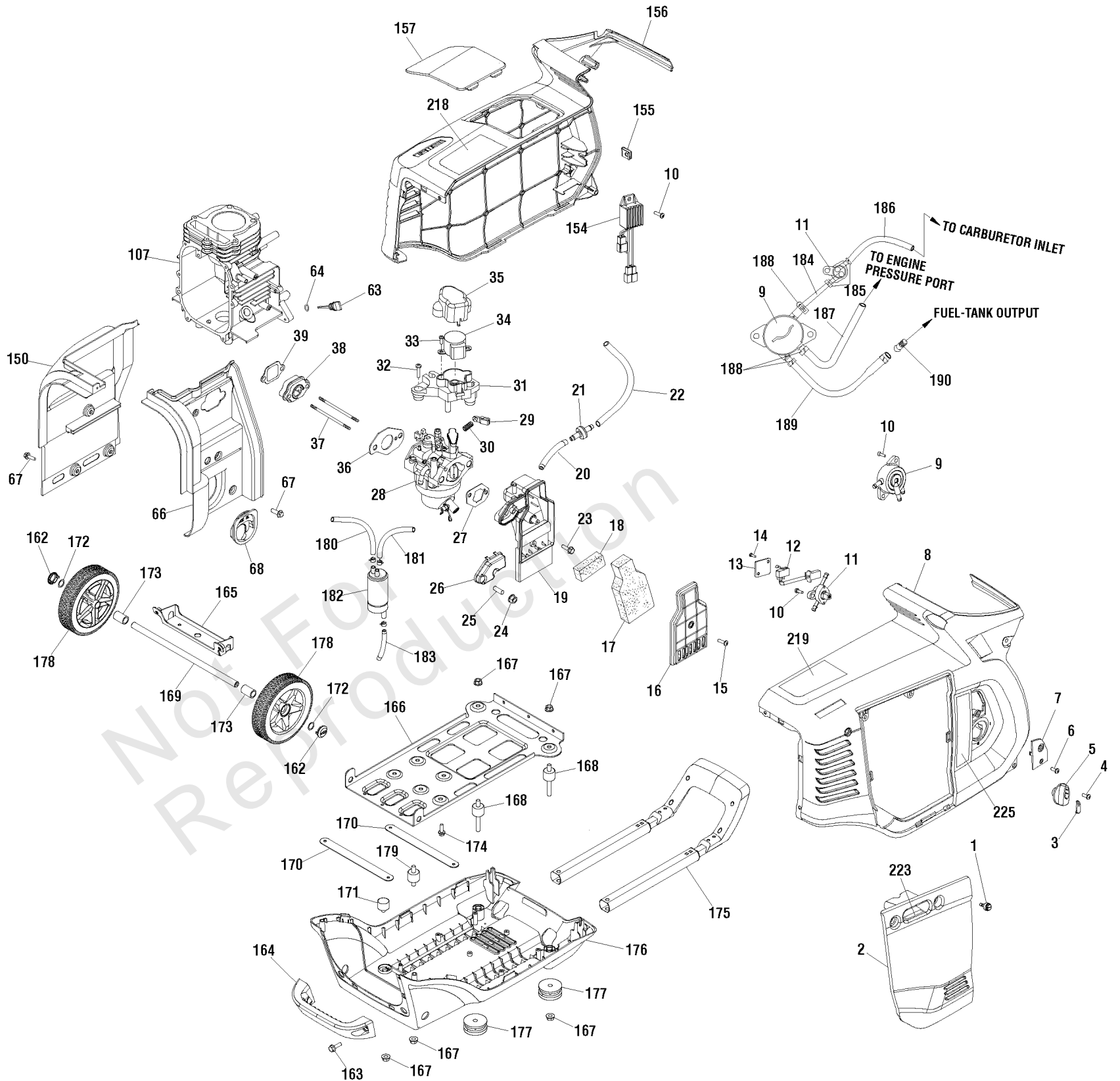
REF NO	PART NO	QTY	DESCRIPTION
138			MOUNT-VIBRATION
139			BUSHING
140			GASKET
141			BOLT-M8 x 30
142			BUSHING
143			MOUNT-VIBRATION
144	319935GS		BRACKET
145			BOLT
146	319937GS		HANDLE
147			SCREW
148	311431GS		BUSHING
149			PIN-PISTON
151			BRACKET
152			BRACKET
153			CHAIN
158	705966		GASKET
159			BOLT-M6 x 20
160			PIPE-MUFFLER
161	705468		GASKET
191			BEARING
217	703189		ARRESTOR-SPARK

Not For
Reproduction

Main Unit (80012940p2)

Note: Unless noted otherwise, use the standard torque specifications

Mfg. No: 030654-00



Main Unit (80012940p2)

REF NO	PART NO	QTY	DESCRIPTION
1	311375GS		BOLT
2	319926GS		PANEL-ACCESS
3	311377GS		COVER-KNOB
4			SCREW
5	705472		KNOB
6			SCREW
7	319936GS		PLATE-TRIM
8	319925GS		COVER-SIDE
9	706057		PUMP-FUEL
10			SCREW
11	311384GS		VALVE-FUEL
12	311385GS		SWITCH-ON/OFF
13			COVER-SWITCH
14			SCREW
15	707177		SCREW
16	705474		COVER-AIR CLEANER
17	705473		FILTER-A/C FOAM
18	705475		FILTER-A/C FOAM
19	705476		BASE-AIR CLEANER
20	317446GS		HOSE
21	317108GS		CHECK VALVE
22	317447GS		HOSE
23	311400GS		BOLT
24			NUT
25			SLEEVE
26	705477		COVER-AIR CLEANER
27	705939		GASKET-AIR CLEANER
28	705940		CARBURATOR
29	705943		ROD-THROTTLE
30			SPRING
31	705944		BRACKET
32			SCREW
33			SCREW
34	705938		MOTOR-STEPPER
35	705941		COVER
36	705945		GASKET
37	705942		STUD
38	705495		INSULATOR
39	705496		GASKET
63	705491		DIPSTICK
64	705492		O-RING
66			DEFLECTOR
67			BOLT-M6 x 12
68			SEAL-RUBBER
107			CRANKCASE
150			DEFLECTOR
154	705467		REGULATOR-VOLTAGE
155			NUT
156	319924GS		COVER-SIDE
157	319928GS		COVER-SPARK PLUG
162	706065		HUBCAP

Main Unit (80012940p2)

REF NO	PART NO	QTY	DESCRIPTION
163			BOLT-M6 x 25
164	319932GS		BAR
165	319934GS		BRACKET
166	319942GS		FRAME
167			NUT-FLANGE M8
168	705469		MOUNT-VIBRATION
169	705494		AXLE
170	705946		BRACKET
171	705470		MOUNT-VIBRATION
172			CLIP
173	705471		SLEEVE
174			BOLT-M8 x 16
175	319938GS		HANDLE
176	319923GS		COVER-BOTTOM
177	311427GS		MOUNT-VIBRATION
178	319940GS		WHEEL
179	311426GS		MOUNT-VIBRATION
180	705483		HOSE
181	705484		HOSE
182	705487		SEPARATOR
183	705485		HOSE
184	705486		HOSE-FUEL
185			CLAMP
186	705480		HOSE-FUEL
187	705481		HOSE-FUEL
188			CLAMP
189	707178		HOSE-FUEL
190	707168		FILTER
218	707172		DECAL
219	707169		DECAL
223	705967		DECAL
225	705978		DECAL

Hardware Identification & Torque Specifications

Torque Specification Chart								
FOR STANDARD METRIC MACHINE HARDWARE (Tolerance ± 20%)								
Property Class	5.6		8.8		10.9		12.9	
	Class 5.6		Class 8.8		Class 10.9		Class 12.9	
Size Of Hardware	in/lbs	Nm.	in/lbs	Nm.	in/lbs	Nm.	in/lbs	Nm.
	ft/lbs		ft/lbs		ft/lbs		ft/lbs	
M3	5.88	.56	13.44	1.28	19.2	1.80	22.92	2.15
M4	13.44	1.28	30.72	2.90	43.44	4.10	52.56	4.95
M5	26.4	2.50	60.96	5.75	5.97	8.10	7.15	9.7
M6	44.64	4.3	7.3	9.9	10.3	14	12.1	16.5
M7	5.2	7.1	12.1	16.5	16.9	23	19.9	27
M8	7.7	10.5	17.7	24	25	34	29	40
M10	15	21	35	48	50	67	59	81
M12	26	36	61	83	86.2	117	103	140
M14	42	58	101	132	136	185	162	220
M16	64	88	147	200	210	285	250	340
M18	89	121	202	275	287	390	346	470
M20	126	171	290	390	405	550	486	660
M22	169	230	390	530	559	745	656	890
M24	217	295	497	375	708	960	840	1140
M27	320	435	733	995	1032	1400	1239	1680
M30	435	590	995	1350	1401	1900	1681	2280
M33	590	800	1349	1830	1902	2580	2278	3090
M36	759	1030	1740	2360	2441	3310	2935	3980
M39	988	1340	2249	3050	3163	4290	3798	5150

Torque Specification Chart						
FOR STANDARD MACHINE HARDWARE (Tolerance ± 20%)						
Hardware Grade	No Marks		SAE Grade 5		SAE Grade 8	
	SAE Grade 2		SAE Grade 5		SAE Grade 8	
Size Of Hardware	in/lbs	Nm.	in/lbs	Nm.	in/lbs	Nm.
	ft/lbs		ft/lbs		ft/lbs	
8-32	19	2.1	30	3.4	41	4.6
8-36	20	2.3	31	3.5	43	4.9
10-24	27	3.1	43	4.9	60	6.8
10-32	31	3.5	49	5.5	68	7.7
1/4-20	66	7.6	8	10.9	12	16.3
1/4-28	76	8.6	10	13.6	14	19.0
5/16-18	11	15.0	17	23.1	25	34.0
5/16-24	12	16.3	19	25.8	29	34.0
3/8-16	20	27.2	30	40.8	45	61.2
3/8-24	23	31.3	35	47.6	50	68.0
7/16-14	30	40.8	50	68.0	70	95.2
7/16-20	35	47.6	55	74.8	80	108.8
1/2-13	50	68.0	75	102.0	110	149.6
1/2-20	55	74.8	90	122.4	120	163.2
9/16-12	65	88.4	110	149.6	150	204.0
9/16-18	75	102.0	120	163.2	170	231.2
5/8-11	90	122.4	150	204.0	220	299.2
5/8-18	100	136	180	244.8	240	326.4
3/4-10	160	217.6	260	353.6	386	525.0
3/4-16	180	244.8	300	408.0	420	571.2
7/8-9	140	190.4	400	544.0	600	816.0
7/8-14	155	210.8	440	598.4	660	897.6
1-8	220	299.2	580	788.8	900	1,244.0
1-12	240	326.4	640	870.4	1,000	1,360.0

The guides and ruler furnished below are designed to help you select the appropriate hardware.

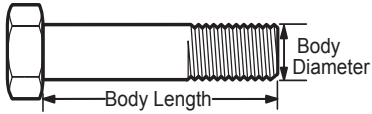


Nut, M8

Thread Diameter (mm)

Inside Diameter (in) Threads per inch

Nut, 1/2-16

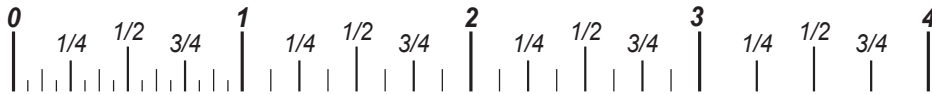


Screw, M8- 1.25 x 25

Thread Diameter (mm) Distance between threads (mm) Body Length (mm)

Body Diameter Threads per inch Body Length (in)

Screw, 1/2- 16 x 2



Standard Hardware Sizing

When a washer or nut is identified as 1/2" (M8), this is the *Nominal size*, meaning the *inside diameter* is 1/2 inch (8mm metric thread diameter); if a second number is present it represents the *threads per inch* (distance between threads).

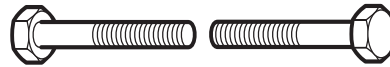
When bolt or capscrew is identified as 1/2 - 16 x 2" (M8 - 1.25 x 50), this means the *Nominal size*, or body diameter is 1/2 inch (8mm metric thread diameter), the second number, 16, represents the *threads per inch*, (*distance between threads*). The final number is the body length of the bolt or screw, 2 inches (50mm).

NOTES

- These torque values are to be used for all hardware excluding: locknuts, self-tapping screws, thread forming screws, sheet metal screws and socket head setscrews.
- Recommended seating torque values for locknuts:
 - for prevailing torque locknuts - use 65% of grade 5 torques.
 - for flange whizlock nuts and screws - use 135% of grade 5 torques.
- Unless otherwise noted on assembly drawings, all torque values must meet this specification.

Common Hardware Types

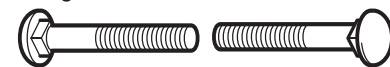
Hex Head Capscrew



Washer



Carriage Bolt



Hex Nut

Wrench & Fastener Size Guide

1/4" Bolt or Nut Wrench—7/16"	5/16" Bolt or Nut Wrench—1/2"	3/8" Bolt or Nut Wrench—9/16"	7/16" Bolt or Nut Wrench (Bolt)—5/8" Wrench (Nut)—11/16"	1/2" Bolt or Nut Wrench—3/4"
M6 Bolt or Nut Wrench—10mm	M8 Bolt or Nut Wrench—13mm	M10 Bolt or Nut Wrench—17mm	M12 Bolt or Nut Wrench—19mm	M14 Bolt or Nut Wrench—22mm

