



# TOOL CHEST 6 DRAWER K7786

## Operation Manual

### Caution: Take Safety Precautions When Using Your Toolbox



Do not open more than one drawer at a time.



Do not step on drawers.



Do not let children near the Toolbox.



Do not separate Chest from Trolley.



Do not exceed Drawer Load Limit.



Not suitable for mounting in Vehicles.



Lock drawers and lid before moving the Toolbox.

### ⚠ IMPORTANT:

THIS OPERATING MANUAL CONTAINS IMPORTANT SAFETY INFORMATION. READ CAREFULLY AND UNDERSTAND ALL INFORMATION BEFORE OPERATING TOOL. SAVE THIS MANUAL FOR FUTURE USE.



## Parts List

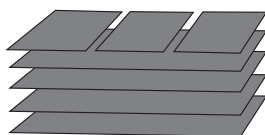


## TOOL CHEST SPECIFICATIONS

	Width	Depth	Height
<b>Overall</b>	660mm	315mm	370mm
<b>Top Section</b>	640mm	300mm	55mm
<b>Small Drawers</b>			
<b>Shallow</b>	170mm	270mm	38mm
<b>Large Drawers</b>			
<b>Shallow</b>	565mm	270mm	38mm
<b>Deep</b>	565mm	270mm	58mm
<b>Total Weight</b>	24.0kg		



Keys x 2



7 x EVA Liners

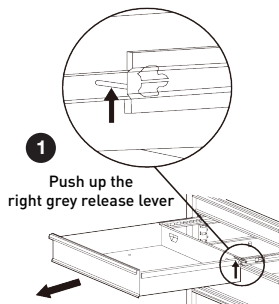
### MAINTENANCE

- Periodically tighten all hardware
- Lubricate the slides twice a year
- Lubricate the lock with graphite annually
- Use a damp Microfibre cloth to clean all surfaces

## Assembly Instructions

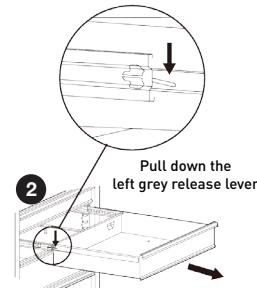
### 1 Removing the Drawers

- Fully extend the empty drawer.
- Push up the right grey release lever while pushing down the left grey release lever.
- Pull the drawer outward until it is released from the drawer slide.



### 2 Re-Inserting The Drawers

- Extend the drawer slides.
- Insert the brackets on each side of the drawer into the slots on the slides, being careful that they are properly positioned.
- Once properly inserted, completely close the drawer to set the slides in their proper positions.



## TOOLS & ASSISTANCE NEEDED



2 People Lift



# TOOL CHEST

## 6 DRAWER K7786

### Replacement Parts



ITEM	PART NO.	DESCRIPTION	QUANTITY
1	K7888	Key Only (Specify Key Number) X 1	1
2	K7786-1	Lock & Key	1
3	K7788-3	Gas Strut (1 X Piece)	2
4	K7788-4	Ball Bearing Slide (Pair)	6
5	K7788-5	Drawer Grip (Small)	3
6	K7788-6	Drawer Grip (Large)	3

ITEM	PART NO.	DESCRIPTION	QUANTITY
7	K7788-7	Side Carry Handle X 1	2
8	K7788-8	EVA Mat Pack 8 Piece	1
9	K7788-9	Small Drawer (Shallow)	3
10	K7788-11	Large Drawer (Shallow)	2
11	K7788-12	Large Drawer (Deep)	1

**KINCROME**  
TOOLS + EQUIPMENT™

National Head Office  
National Distribution and Showroom  
3 Lakeview Dve, Caribbean Business Park  
Scoresby Victoria 3179 Australia  
ABN 41 007 185 006

Administration  
T +61 3 9730 7100 F + 61 3 9730 7199  
E [enquiries@kincrome.com.au](mailto:enquiries@kincrome.com.au)  
W [kincrome.com.au](http://kincrome.com.au)

Customer Service Centre  
T 1300 657 528 F 1300 556 005

Made to Kincrome Tools & Equipment Pty Ltd Global specifications and quality standards in China  
Kincrome UK Ltd PO Box 646 EASTLEIGH SO50 0NA

Australia & Global	UK & EU
<a href="http://www.kincrome.com.au">www.kincrome.com.au</a>	<a href="http://www.kincrome.co.uk">www.kincrome.co.uk</a>
<a href="mailto:enquiries@kincrome.com.au">enquiries@kincrome.com.au</a>	<a href="mailto:enquiries@kincrome.co.uk">enquiries@kincrome.co.uk</a>