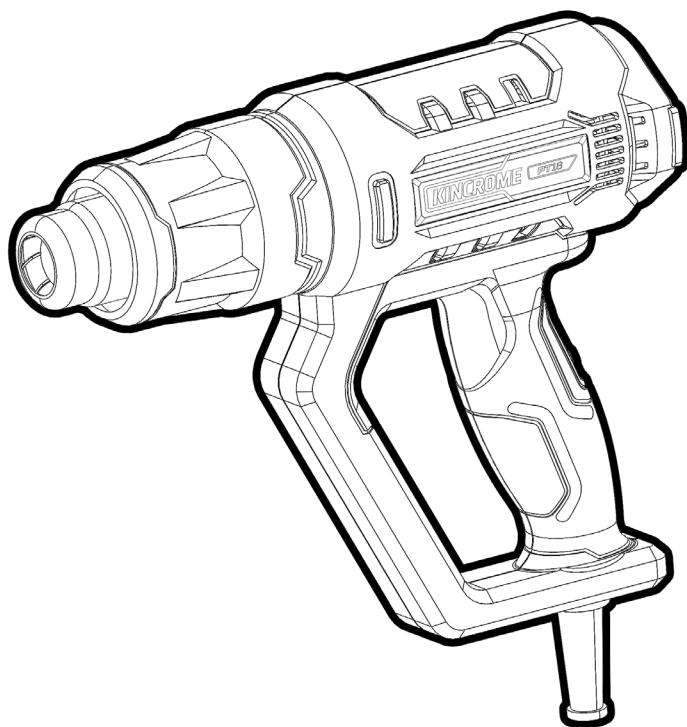


# **KINCROME** **PT**

## **240V Heat Gun 2000W**



**K23231**

ED1 December 2023

## General Power Tool Safety Warnings

K23231



**WARNING** Read all safety warnings and all instructions. Failure to follow the warnings and instructions may result in electric shock, fire and/or serious injury. Save all warnings and instructions for future reference. The term "power tool" in the warnings refers to your mains-operated (corded) power tool or battery-operated (cordless) power tool.

### 1) Work area safety

- a) **Keep work area clean and well lit.**  
*Cluttered or dark areas invite accidents.*
- b) **Do not operate power tools in explosive atmospheres, such as in the presence of flammable liquids, gases or dust.** *Power tools create sparks which may ignite the dust or fumes.*
- c) **Keep children and bystanders away while operating a power tool.** *Distractions can cause you to lose control.*

### 2) Electrical safety

- a) **Power tool plugs must match the outlet. Never modify the plug in any way. Do not use any adapter plugs with earthed (grounded) power tools.** *Unmodified plugs and matching outlets will reduce risk of electric shock.*
- b) **Avoid body contact with earthed or grounded surfaces, such as pipes, radiators, ranges and refrigerators.** *There is an increased risk of electric shock if your body is earthed or grounded.*
- c) **Do not expose power tools to rain or wet conditions.** *Water entering a power tool will increase the risk of electric shock.*
- d) **Do not abuse the cord. Never use the cord for carrying, pulling or unplugging the power tool. Keep cord away from heat, oil, sharp edges or moving parts.** *Damaged or entangled cords increase the risk of electric shock.*
- e) **When operating a power tool outdoors, use an extension cord suitable for outdoor use.** *Use of a cord suitable for outdoor use reduces the risk of electric shock.*
- f) **If operating a power tool in a damp location is unavoidable, use a residual current device (RCD) protected supply.** *Use of an RCD reduces the risk of electric shock.*

### 3) Personal safety

- a) **Stay alert, watch what you are doing and use common sense when operating a power tool. Do not use a power tool while you are tired or under the influence of drugs, alcohol or medication.** *A moment of inattention while operating power tools may result in serious personal injury.*
- b) **Use personal protective equipment. Always wear eye protection.** *Protective equipment such as dust mask, non-skid safety shoes, hard hat, or hearing protection used for appropriate conditions will reduce personal injuries.*
- c) **Prevent unintentional starting. Ensure the switch is in the off-position before connecting to power source and/or battery pack, picking up or carrying the tool.** *Carrying power tools with your finger on the switch or energising power tools that have the switch on invites accidents.*
- d) **Remove any adjusting key or wrench before turning the power tool on.** *A wrench or a key left attached to a rotating part of the power tool may result in personal injury.*
- e) **Do not overreach. Keep proper footing and balance at all times.** *This enables better control of the power tool in unexpected situations.*

- f) **Dress properly. Do not wear loose clothing or jewellery. Keep your hair, clothing and gloves away from moving parts.** *Loose clothes, jewellery or long hair can be caught in moving parts.*
- g) **If devices are provided for the connection of dust extraction and collection facilities, ensure these are connected and properly used.** *Use of dust collection can reduce dust-related hazards.*

### 4) Power tool use and care

- a) **Do not force the power tool. Use the correct power tool for your application.** *The correct power tool will do the job better and safer at the rate for which it was designed.*
- b) **Do not use the power tool if the switch does not turn it on and off.** *Any power tool that cannot be controlled with the switch is dangerous and must be repaired.*
- c) **Disconnect the plug from the power source and/or the battery pack from the power tool before making any adjustments, changing accessories, or storing power tools.** *Such preventive safety measures reduce the risk of starting the power tool accidentally.*
- d) **Store idle power tools out of the reach of children and do not allow persons unfamiliar with the power tool or these instructions to operate the power tool.** *Power tools are dangerous in the hands of untrained users.*
- e) **Maintain power tools. Check for misalignment or binding of moving parts, breakage of parts and any other condition that may affect the power tool's operation. If damaged, have the power tool repaired before use.** *Many accidents are caused by poorly maintained power tools.*
- f) **Keep cutting tools sharp and clean.** *Properly maintained cutting tools with sharp cutting edges are less likely to bind and are easier to control.*
- g) **Use the power tool, accessories and tool bits etc. in accordance with these instructions, taking into account the working conditions and the work to be performed.** *Use of the power tool for operations different from those intended could result in a hazardous situation.*

### 5) Service

- a) **Have your power tool serviced by a qualified repair person using only identical replacement parts.** *This will ensure that the safety of the power tool is maintained.*

## Additional Safety Instructions Heat Guns

K23231



**WARNING!** This heat gun is not intended for use by persons (including children) with reduced physical, sensory or mental capabilities, or lack of experience and knowledge, unless they have been given supervision or instruction concerning use of the power tool by a person responsible for their safety. Children should be supervised to ensure that they do not play with the appliance.

- 1) Only use heat gun as described in manual.
  - 2) The heat gun is intended for household use only.
  - 3) The heat gun may start a fire if appropriate precautions are not taken.
  - 4) Do not obstruct quick release mechanism and keep fingers clear.
  - 5) Keep the heat gun away from rain or water to avoid risks of fire or electric shock.
  - 6) After allowing tool to sufficiently cool, store under cover in a dry place.
  - 7) The nozzle gets extremely hot, never touch the nozzle or nose until it is sufficiently cooled.
  - 8) Wear gloves and eye protection.
  - 9) Do not direct the hot airflow towards yourself, people or animals.
  - 10) Never reduce the hot airflow by blocking or covering the nozzle.
  - 11) Ensure that the metal nose and nozzle does not come into contact with materials during or after operation.
  - 12) Ensure that the heat gun is always clean, dry and free from oil or grease.
  - 13) Always keep the heat gun upright or suspend it with the hanging hook. Do not hang on person.
  - 14) Always allow the heat gun to cool down completely before storing it.
  - 15) Always store the heat gun in a safe place, out of the reach of children. It is not a toy.
- 16) A fire may result if the heat gun is not used with care, therefore:
    - a) Be careful when using the heat gun in places where there are combustible materials;
    - b) Do not apply heat to the same place for a long time;
    - c) Do not use in the presence of an flammable gases or explosive atmosphere;
    - d) Be aware that heat may be conducted to combustible materials that are out of sight;
    - e) After use, allow the heat gun to cool down before storage;
    - f) Do not leave the heat gun unattended when it is switched on.
  - 17) When working on small or irregular shaped objects, clamp the object in a vice or clip.
  - 18) Ensure the On/Off SWITCH is at the OFF "0" position before plugging the power supply.
  - 19) Unplug the heat gun when it is not in use. Ensure that the heat gun cannot start accidentally. If the heat gun stops while it is in use, disconnect it from the power supply.
  - 20) If the supply cord is damaged, it must be replaced by an electrician or a power tool repairer in order to avoid a hazard.

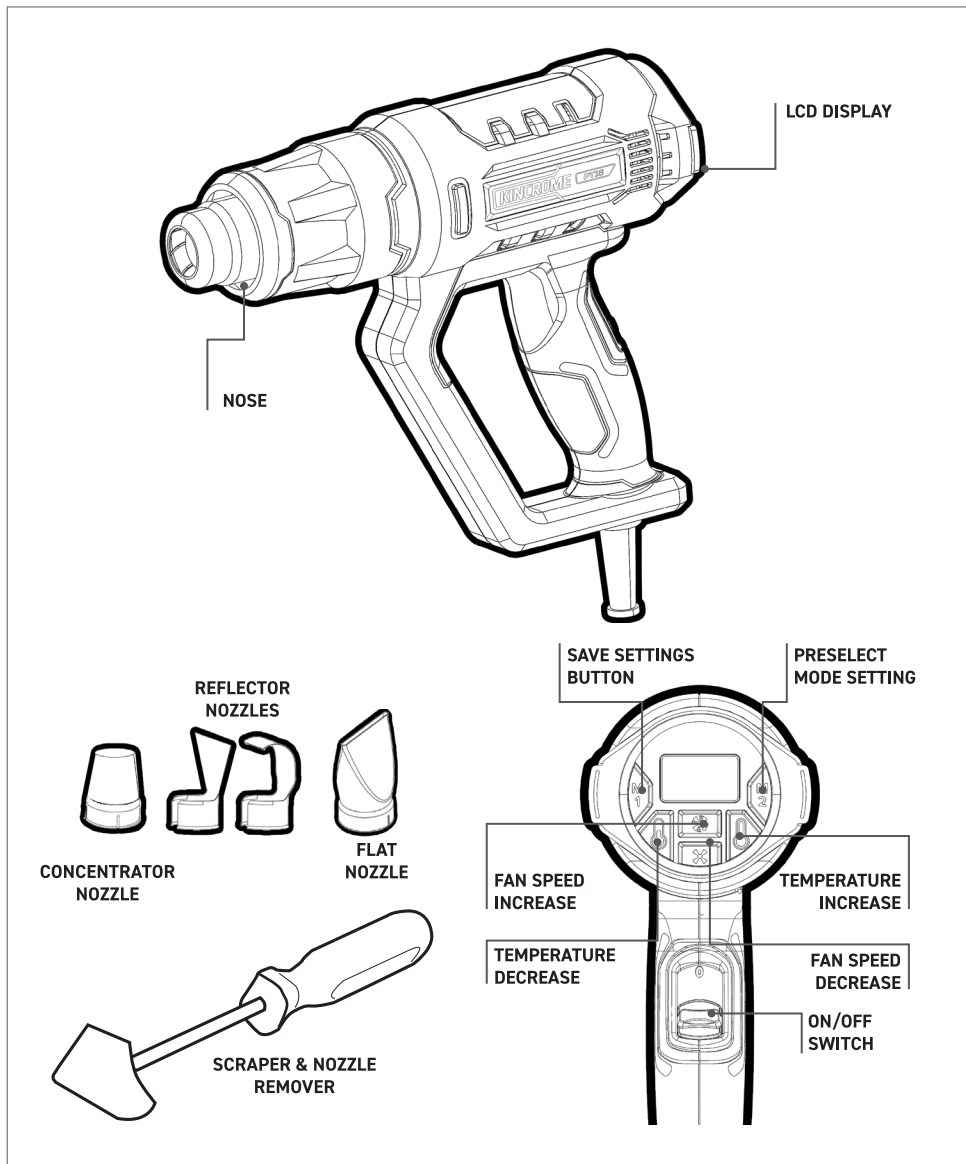
## Symbols

The rating plate on your tool may show symbols. These represent important information about the product or instructions on its use.

	Direct current, DC		Waste electrical products should not be disposed of with household waste. Please recycle where facilities exist. Check with your Local Authority or retailer for recycling advice.
	Refer to instruction manual/booklet		
	Wear eye protection		General warning
	Double insulation symbol		Regulator compliance mark

# Know Your Product

K23231



## Specifications

Nominal Voltage	240V~ 50Hz
Wattage	2000W
Airflow Setting I	250-500 l/min

Airflow Setting II	250-500 l/min
Temperature Setting I	50°C
Temperature Setting II	50-650°C

## Heat Gun Controls - Turning the Heatgun ON/OFF

K23231

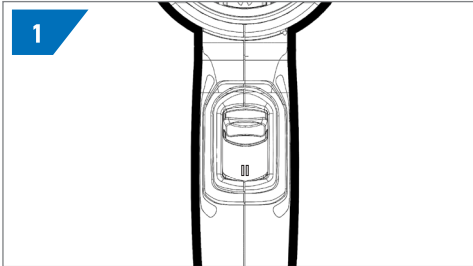
The ON/OFF switch can be set to two airflow settings. Suitable airflow and temperature combinations can be selected according to the applications.

I = 50°C, 250-500 l/min

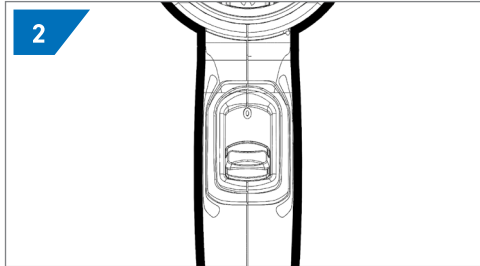
II = 50 - 650°C, 250-500 l/min

The air setting I is suitable for bending plastic and heating-shrinking plastic.

The air setting II is suitable for stripping paint and defrosting pipes.

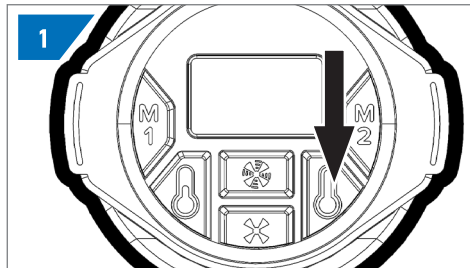


1. TO TURN ON SELECT AIR SPEED SETTING I OR II



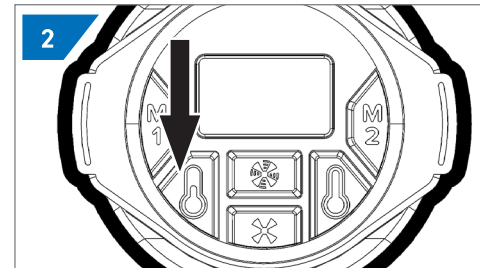
2. TO TURN OFF SELECT SETTING 0

## Setting The Temperature



1. TEMPERATURE INCREASE

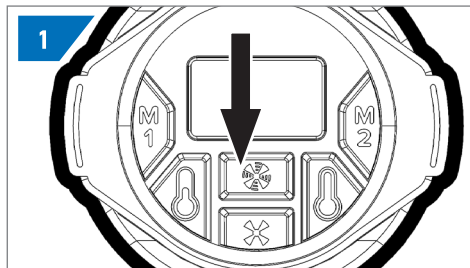
- Switch the tool on to position I or II.
- Select (+) to increase the temperature.



2. TEMPERATURE DECREASE

- Switch the tool on to position I or II.
- Select (-) to decrease the temperature.

## Setting The Airspeed

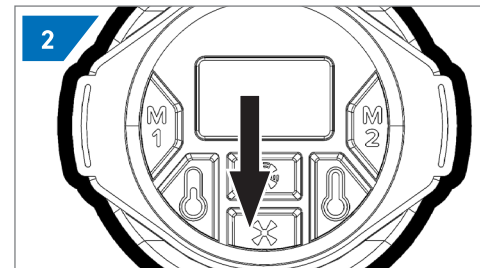


1. FAN SPEED INCREASE

- Switch the tool on to position I or II.
- Select (+) to increase the temperature.

**Setting I**

- Drying paint and varnish
- Removing stickers
- Waxing and dewaxing
- Drying wet timber prior to filling
- Shrinking PVC wrapping and insulation tubes



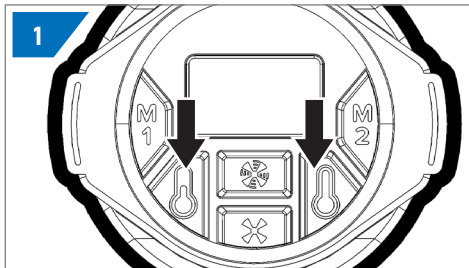
2. FAN SPEED DECREASE

- Switch the tool on to position I or II.
- Select (-) to decrease the temperature.

**Setting II**

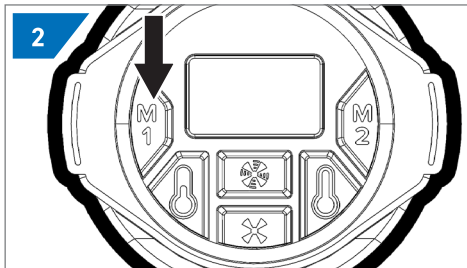
- Welding plastics
- Thawing frozen pipes
- Bending plastic pipes and sheets
- Loosening rusted or tightly fastened nuts and bolts.
- Removing paint, varnish and lacquer.

## How to use Heat Gun - Save setting



### 1. SET THE DESIRED TEMPERATURE

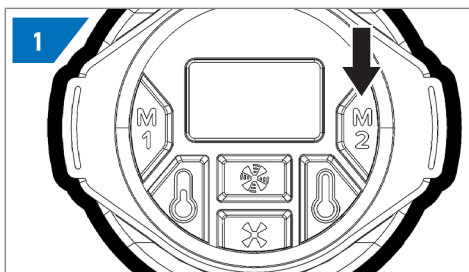
- Switch the tool on to position I or II.
- Select the desired temperature.



### 2. STORE SETTING

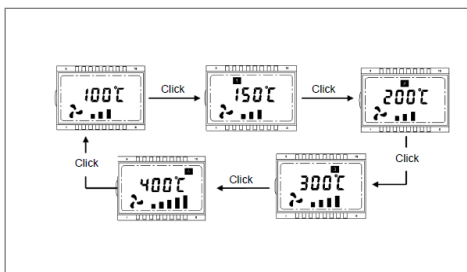
- Press the store setting button.

## How to use Heat Gun - Preset modes

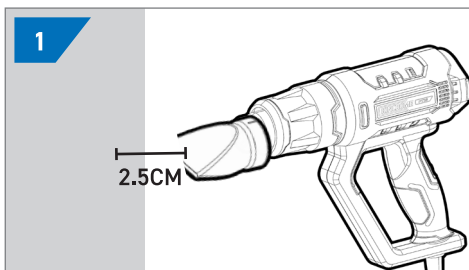


### 1. PRESET MODE SELECTOR

- 5 preset modes are available for quick selection of temperature and airflow setting for most frequent and defined applications.
- Turn on the tool.
- Click the button the Mode Selection Button to select one desired mode of preset temperature and air flow.

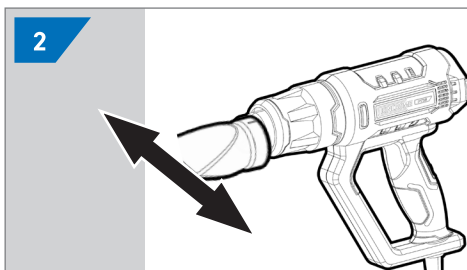


## Using the Heatgun - Paint Removal / Softening Adhesives



### 1. POSITION THE NOZZLE

Position the flat nozzle at a distance of 2.5cm from the surface.

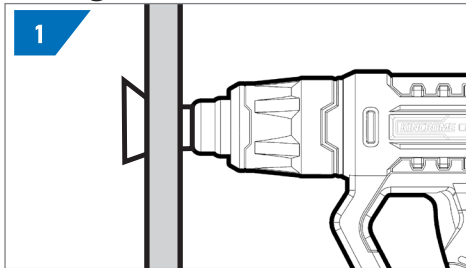


### 2. HEATGUN MOVEMENT

Move the heat gun side to side until the paint starts to blister or the wall paper begins to peel.

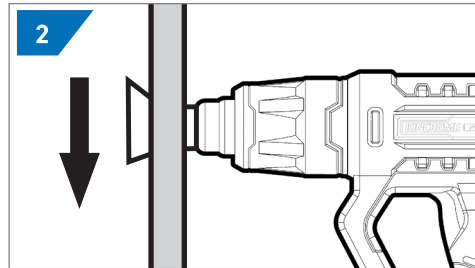
## Using the Heat Gun - Defrosting Water Pipes

K23231



### 1. POSITION THE NOZZLE

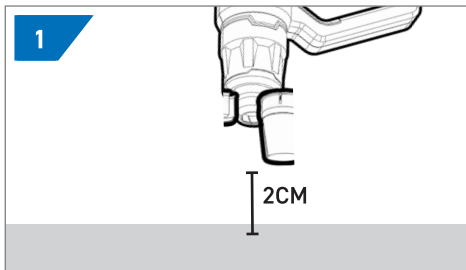
Position the reflector nozzle at a distance of 2.5cm from the surface.



### 2. HEATGUN MOVEMENT

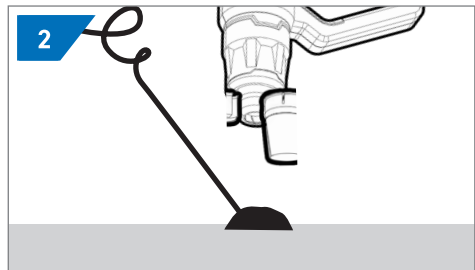
Heat the frozen area inwards from the outer edges towards the centre.

## Using the Heat Gun - Soldering



### 1. POSITION THE NOZZLE

With the concentrator nozzle attached, hold the heat gun 2cm away from the soldering site and allow it to heat up.



### 2. HEATGUN MOVEMENT

Once heated, apply solder to the desired area and move slowly as required.

## Maintenance

This power tool normally requires no maintenance; from time to time the ventilation slots on the motor casing should be cleaned out. If the unit should become defective, repair should be performed by an authorized service agent for electric tools.

Avoid using solvents when cleaning plastic parts. Most plastics are susceptible to damage from various types of commercial solvents and may be damaged by their use. Use clean cloths to remove dirt, dust, oil, grease, etc.

### Warning!

*Do not at any time let brake fluids, gasoline, petroleum based products, penetrating oils, etc., come in contact with plastic parts. Chemicals can damage, weaken or destroy plastic which may result in serious personal injury.*

## Office Contact Details



Phone: 1300 657 528



Email: [enquiries@kincrome.com.au](mailto:enquiries@kincrome.com.au)



Website: [www.kincrome.com.au](http://www.kincrome.com.au)

## Warranty



3 YEAR STANDARD  
+2 FURTHER YEARS WHEN  
REGISTERED ONLINE

Our goods and services come with guarantees that cannot be excluded under the Australian Consumer Law. For major failures with the service, you are entitled: -to cancel your service contract with us; and -to a refund for the unused portion, or to compensation for its reduced value. You are also entitled to choose a refund or replacement for major failures with goods. If a failure with the goods or a service does not amount to a major failure, you are entitled to have the failure rectified in a reasonable time. If this is not done you are entitled to a refund for the goods and to cancel the contract for the service and obtain a refund of any unused portion. You are also entitled to be compensated for any other reasonably foreseeable loss or damage from a failure in the goods or service. Kincrome Australia Pty Ltd of 3 Lakeview Drive, Caribbean Park, Scoresby, Victoria (Tel 1300

657 528) also provides the Kincrome Limited Lifetime Guarantee, 5 Year Warranty, 5 Year (3+2) warranty, 3 Year Warranty, 2 Year Warranty and 12-Month Warranty (Kincrome Express Warranties) in respect of some of its products. If a product is covered by a Kincrome Express Warranty and it has materials or workmanship defects (other than defects caused by abnormal or non warranted use) which are covered under the terms of the relevant Kincrome Express Warranty, you can, at your cost, send the product to the above address for repair or replacement. Your rights under a Kincrome Express Warranty are in addition to any other rights you have under the Australian Consumer Law or other applicable laws. For further details and terms please check our product guide, visit [www.kincrome.com.au](http://www.kincrome.com.au) or call us. Every effort is made to ensure advertised stock is available, but due to factors beyond the control of Kincrome Australia Pty. Ltd, not all products advertised in this catalogue may be available at all stores. Kincrome Australia Pty. Ltd. reserves the right to correct printing errors. All sizes shown are approximate only. Accessories shown do not come with the product unless otherwise specified. Due to printing process, colours in this catalogue may vary slightly to actual item. E. & O. E.© Copyright 2022. Reproduction in whole or in part is prohibited without written approval.