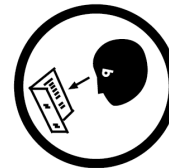


OPERATION MANUAL

CAUTION: TAKE SAFETY PRECAUTIONS WHEN USING YOUR TOOLBOX

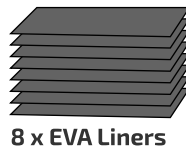


IMPORTANT:

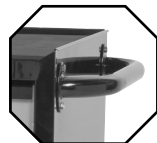
THIS OPERATING MANUAL CONTAINS IMPORTANT SAFETY INFORMATION. READ CAREFULLY AND UNDERSTAND ALL INFORMATION BEFORE OPERATING CHEST AND TROLLEY COMBO. SAVE THIS MANUAL FOR FUTURE USE.

CHEST STORED IN TROLLEY FOR TRANSPORT PURPOSES

PARTS LIST



8 x EVA Liners



Trolley Handle



Keys x 6



16 x 12mm Bolts for Castors



4 x 10mm Bolts for Handle

CHEST & TROLLEY SPECIFICATIONS

	Width	Depth	Height
Overall Total	756.5mm	461mm	1309mm
Overall (w/o castors)	756.5mm	461mm	1164mm
Weight Total	50.3kg		

CHEST	Width	Depth	Height
Overall	655mm	305mm	363mm
Top Tray	650mm	295mm	49mm
Small Drawers	565mm	268mm	40mm
Deep Drawers	565mm	268mm	52mm
Weight	17.3kg		

TROLLEY	Width	Depth	Height
Overall	756.5mm	461mm	957mm
Overall (w/out Castors)	756.5mm	461mm	812mm
Small Drawers	586mm	408mm	53mm
Deep Drawers	586mm	408mm	132mm
Cabinet	670mm	438mm	520mm
Castor Size	114 x 38mm (4.5" x 1.5")	2 x Locking	
Weight	33kg		



Non-Locking Castors x 2

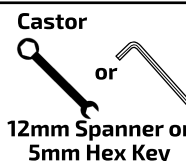


Locking Castors x 2

TOOLS & ASSISTANCE NEEDED



2 People Lift



Castor
12mm Spanner or
5mm Hex Key



Handle
10mm Spanner

ASSEMBLY INSTRUCTIONS

- 1 REMOVE PRODUCT FROM CARTON AND STAND UNIT UPRIGHT
- 2 UNLOCK THE TROLLEY AND REMOVE THE HANDLE AND CASTORS FROM THE DEEP DRAWER
- 3 LOCK UNIT, THEN FLIP UNIT UPSIDE DOWN
- 4 UNLOCK CABINET, THEN OPEN CABINET DOORS. LOCATED INSIDE IS THE CHEST, AND 4 BOLTS SECURING IT ON A WOOD PANEL

These are holding the chest down and need to be removed using a 12mm Spanner or 5mm Hex Key.

NOTE: Bolts need to be kept for castor installation further in the process.

- 5 REMOVE THE REMOVEABLE PANEL FROM THE REAR OF THE TROLLEY USING A PHILLIPS SCREWDRIVER.

Unscrew the 8 screws from the removeable panel. Save the screws to reinstall the panel later. There are 4 short screws and 4 long screws that come out. Ensure they go back in the same place.

NOTE: Short Screws at the bottom of the Panel, and longer screws at the top.

- 6 REMOVE BOLTS FROM WOOD PANELS AND REMOVE THE CHEST FROM THE TROLLEY
- 7 WITH THE UNIT STILL UPSIDE DOWN, REINSTALL THE BACK PANEL AND SCREWS, WITH SHORT SCREWS AT THE TOP, AND LONGER SCREWS AT THE BOTTOM

Please refer to pictures in Step 5.

- 8 MOUNT THE CASTORS TO TROLLEY.

Ensure both Lockable Swivel Castors are located at the front of the trolley for easy locking when in use, and tighten using a 12mm Spanner or 5mm Hex Key.

- 9 LOCK UNIT, AND FLIP TO THE CORRECT ORIENTATION.
- 10 STANDING THE TROLLEY UPRIGHT, INSTALL THE CHEST ON TOP OF THE TROLLEY.

- 11 INSTALL THE CHEST HANDLE AND THE TROLLEY HANDLE

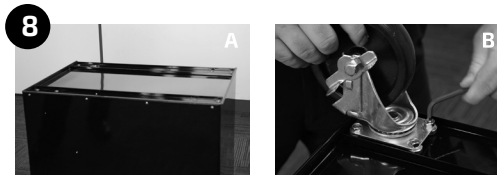
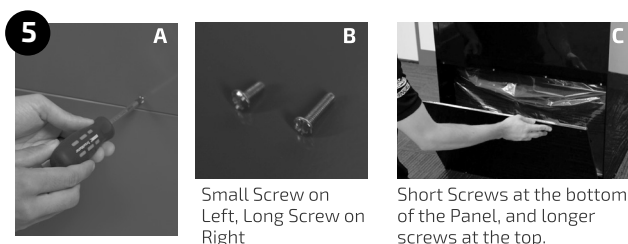
Trolley Handle can be mounted to either side of the Trolley.

REMOVING THE DRAWERS

Fully extend the empty drawer. Push up the right grey release lever while pushing down the left grey release lever. Pull the drawer outward until it is released from the drawer slide.

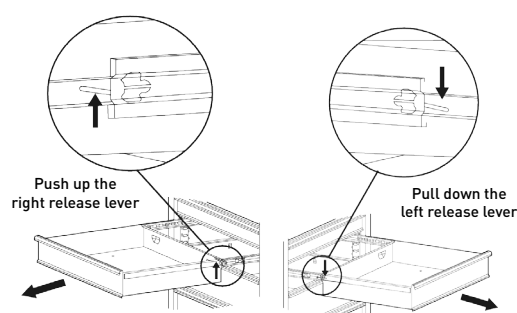
RE-INSERTING THE DRAWERS

Extend the drawer slides. Insert the brackets on each side of the drawer into the slots on the slides, being careful that they are properly positioned. Once properly inserted, completely close the drawer to set the slides in their proper positions.



Maintenance

- Periodically tighten all hardware
- Periodically lubricate castors
- Lubricate the slides twice a year
- Lubricate the lock with graphite annually
- Use a damp Microfibre cloth to clean all surfaces



CHEST & TROLLEY COMBO

6 DRAWER (660mm/26")

STP7526

REPLACEMENT PARTS



ITEM	PART NO.	DESCRIPTION	QUANTITY
1	STP7777	Lock & Key (Chest Key)	1
2	STP7778	Lock & Key (Trolley Key)	1
3	STP7776	Lock & Key (Cabinet Key)	1
4	STP7779	Key Only (Specify Key Number) X 1	1
5	STP7736-3	Trolley Handle	1
6	STP7726-3	Ball Bearing Slides Trolley (Pair)	2
7	STP7736-8	Castor Swivel x 1	2
8	STP7736-9	Castor Swivel x 1 (Locking)	2

ITEM	PART NO.	DESCRIPTION	QUANTITY
9	STP7736-10	Castor Bolt Pack	1
10	STP7526-1	EVA Mat Pack 8 Piece	1
11	STP7536-8	Chest Handle	2
12	STP7526-3	Gas Struts	2
13	STP7524-3	Ball Bearing Slides Chest (Pair)	4