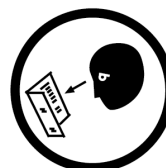


OPERATION MANUAL

CAUTION: TAKE SAFETY PRECAUTIONS WHEN USING YOUR TOOLBOX



IMPORTANT:

THIS OPERATING MANUAL CONTAINS IMPORTANT SAFETY INFORMATION. READ CAREFULLY AND UNDERSTAND ALL INFORMATION BEFORE OPERATING TOOL. SAVE THIS MANUAL FOR FUTURE USE.

PARTS LIST



TOOL CHEST SPECIFICATIONS

	Width	Depth	Height
Overall	900mm	305mm	365mm
Top Tray	883mm	295mm	50mm
Small Drawers	810mm	268mm	40mm
Deep Drawers	810mm	268mm	50mm
Weight	21.4kg		



5 x EVA Liners



Keys x 2

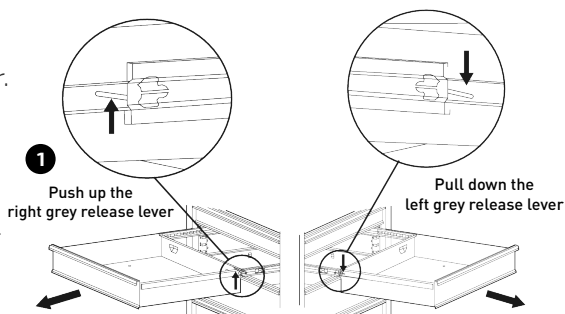
MAINTENANCE

- Periodically tighten all hardware
- Lubricate the slides twice a year
- Lubricate the lock with graphite annually
- Use a damp Microfibre cloth to clean all surfaces

ASSEMBLY INSTRUCTIONS

1 Removing the Drawers

- Fully extend the empty drawer.
- Push up the right grey release lever while pushing down the left grey release lever.
- Pull the drawer outward until it is released from the drawer slide.



2 Re-Inserting The Drawers

- Extend the drawer slides.
- Insert the brackets on each side of the drawer into the slots on the slides, being careful that they are properly positioned.
- Once properly inserted, completely close the drawer to set the slides in their proper positions.

TOOLS & ASSISTANCE NEEDED



2 People Lift

REPLACEMENT PARTS



ITEM	PART NO.	DESCRIPTION	QUANTITY
1	STP7536-1	Key Only (Specify Key Number) X 1	1
2	STP7536-2	Lock & Key	1
3	STP7536-3	Gas Strut (1 X Piece)	2
4	STP7536-4	Ball Bearing Slide (Pair)	4
5	STP7536-8	Side Carry Handle	2
6	STP7536-9	EVA Mat Pack 5 Piece	1