



# TOOL TROLLEY

## 9 DRAWER EXTRA WIDE BODY

K7849

### Operation Manual

#### Caution: Take Safety Precautions When Using Your Toolbox



Do not open more than one drawer at a time.



Do not step on drawers.



Do not let children near the Toolbox.



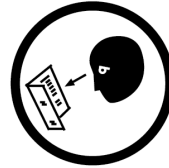
Do not separate Chest from Trolley.



Do not exceed Drawer Load Limit



Not suitable for mounting in Vehicles



Set the brake on the locking castors unless you are moving the Toolbox.



Lock drawers and lid before moving the Toolbox.

#### IMPORTANT:

THIS OPERATING MANUAL CONTAINS IMPORTANT SAFETY INFORMATION. READ CAREFULLY AND UNDERSTAND ALL INFORMATION BEFORE OPERATING STORAGE CABINET. SAVE THIS MANUAL FOR FUTURE USE



### Parts List



#### TOOL TROLLEY SPECIFICATIONS

	Width	Depth	Height
<b>Overall</b>	1125mm	465mm	1010mm
<b>Overall (w/out Castors)</b>	1125mm	465mm	850mm
<b>Top Section</b>	1040mm	455mm	10mm
<b>Top Wide Drawer</b>	930mm	390mm	90mm
<b>Small Drawers</b>			
<b>Shallow</b>	295mm	390mm	55mm
<b>Deep</b>	295mm	390mm	130mm
<b>Extra Deep</b>	295mm	390mm	210mm
<b>Large Drawers</b>			
<b>Shallow</b>	560mm	390mm	55mm
<b>Deep</b>	560mm	390mm	130mm
<b>Extra Deep</b>	560mm	390mm	210mm
<b>Castor Size</b>	125x50mm (5"x2") 2x Locking		
<b>Total Weight</b>	78kg		



Non-Locking Swivel Castors (2)



Locking Swivel Castors (2)



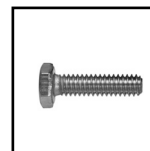
Keys x 2



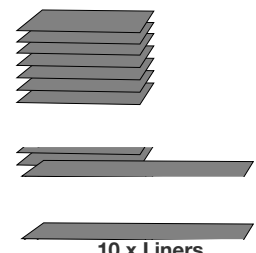
Trolley Handle x 1



16 x 12mm Bolts for Castors



4 x 10mm Bolts for Handle



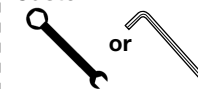
10 x Liners

#### TOOLS & ASSISTANCE NEEDED



2 People Lift

Castor



12mm Spanner or 5mm Hex Key

Handle



10mm Spanner



# TOOL TROLLEY

## 9 DRAWER EXTRA WIDE BODY

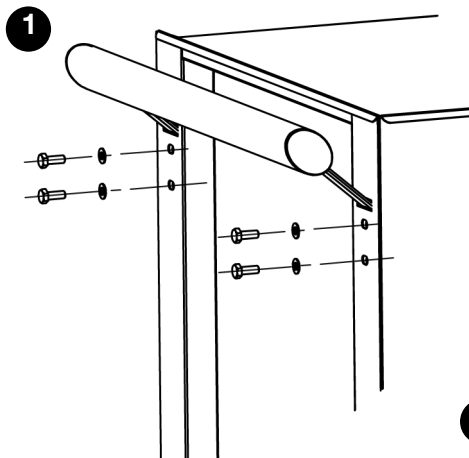
K7849

### Assembly Instructions

#### 1 Handle Installing

- Position the trolley side handle behind the holes on the trolley.
- Attach with (4) bolts and washers and tighten with an adjustable wrench.

**Note:** The side handle can be mounted to either side of the trolley.

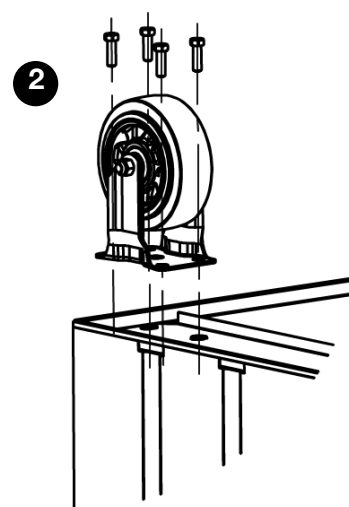


#### 2 Castor Installing (If applicable)

- Be sure the drawers are locked and lay the trolley on its side.
- Secure castors to the unit using the 12mm bolts provided.
- Tighten with a 12mm spanner or 5mm hex key.
- Repeat this process for the castors on the opposite of the trolley.
- Return the trolley to its upright position.

**Caution:** Do not over tighten the bolts.

**Caution:** Both locking castors must be fitted to front of trolley.



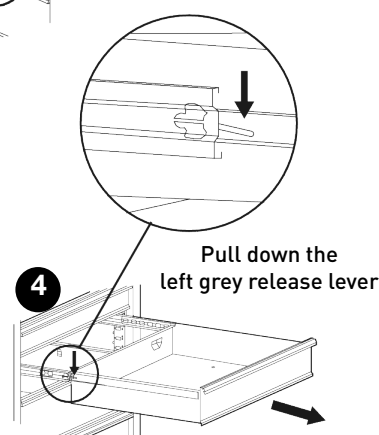
#### 3 Removing the Drawers

- Fully extend the empty drawer.
- Push up the right grey release lever while pushing down the left grey release lever.
- Pull the drawer outward until it is released from the drawer slide.



#### 4 Re-Inserting The Drawers

- Extend the drawer slides.
- Insert the brackets on each side of the drawer into the slots on the slides, being careful that they are properly positioned.
- Once properly inserted, completely close the drawer to set the slides in their proper positions.



### MAINTENANCE

- Periodically tighten all hardware
- Periodically lubricate castors
- Lubricate the slides twice a year
- Lubricate the lock with graphite annually
- Use a damp Microfibre cloth to clean all surfaces



# TOOL TROLLEY

## 9 DRAWER EXTRA WIDE BODY

K7849

### Replacement Parts



ITEM	PART NO.	DESCRIPTION	QUANTITY
1	K7888	Key Only (Specify Key Number) X 1	1
2	K7787-1	Lock & Key	1
3	K7787-3	Trolley Handle	1
4	K7787-4	Ball Bearing Slides (Pair)	9
5	K7849 -1	Drawer Grip (Large)	1
6	K7849 -2	Drawer Grip (Medium)	4
7	K7849 -3	Drawer Grip (Small)	4
8	K7849-4	Large Drawer (Shallow)	1
9	K7849-5	Medium Drawer (Shallow)	2
10	K7849-6	Medium Drawer (Deep)	1

ITEM	PART NO.	DESCRIPTION	QUANTITY
11	K7849-7	Medium Drawer (Extra Deep)	1
12	K7849-8	Small Drawer (Shallow)	2
13	K7849-9	Small Drawer (Deep)	1
14	K7849-10	Small Drawer (Extra Deep)	1
15	K7849-11	EVA Mat Pack 10 Piece	1
16	K7787-12	Castor Swivel X 1	2
17	K7787-10	Castor Swivel X 1 (Brake)	2
18	K7787-11	Castor Bolt Pack	1

**KINCROME**  
TOOLS + EQUIPMENT™

National Head Office  
National Distribution and Showroom  
3 Lakeview Dve, Caribbean Business Park  
Scoresby Victoria 3179 Australia

ABN 41 007 185 006

Administration  
T +61 3 9730 7100 F + 61 3 9730 7199

E enquiries@kincrome.com.au  
W kincrome.com.au

Customer Service Centre  
T 1300 657 528 F 1300 556 005

Made to Kincrome Tools & Equipment Pty Ltd Global specifications and quality standards in China  
Kincrome UK Ltd PO Box 646 EASTLEIGH SO50 0NA

Australia & Global	UK & EU
www.kincrome.com.au	www.kincrome.co.uk
enquiries@kincrome.com.au	enquiries@kincrome.co.uk