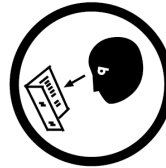


Operation Manual

Caution: Take Safety Precautions When Using Your Toolbox



IMPORTANT:

THIS OPERATING MANUAL CONTAINS IMPORTANT SAFETY INFORMATION. READ CAREFULLY AND UNDERSTAND ALL INFORMATION BEFORE OPERATING TOOL CHEST. SAVE THIS MANUAL FOR FUTURE USE



Do not open more than one drawer at a time.



Do not step on drawers.



Do not let children near the Toolbox.



Do not separate Chest from Trolley.



Do not exceed Drawer Load Limit



Not suitable for mounting in Vehicles



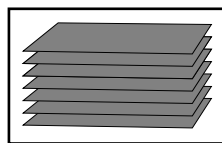
Lock drawers and lid before moving the Toolbox.



Parts List



2 x Keys



7 x EVA Liners

TOOL CHEST SPECIFICATIONS

	Width	Depth	Height
Overall	745mm	475mm	485mm
Top Area	570mm	470mm	118mm
Drawers	546mm	397mm	41mm
Weight	41Kg		

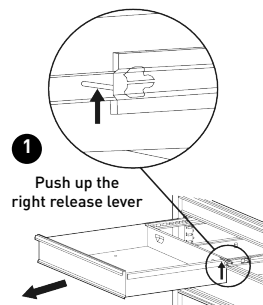
MAINTENANCE

- Periodically tighten all hardware
- Lubricate the slides twice a year
- Lubricate the lock with graphite annually
- Use a damp Microfibre cloth to clean all surfaces

Assembly Instructions

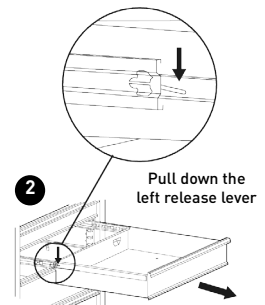
1 Removing the Drawers

- Fully extend the empty drawer.
- Push up the right release lever while pushing down the left release lever.
- Pull the drawer outward until it is released from the drawer slide.



2 Re-Inserting The Drawers

- Extend the drawer slides.
- Insert the brackets on each side of the drawer into the slots on the slides, being careful that they are properly positioned.
- Once properly inserted, completely close the drawer to set the slides in their proper positions.



TOOLS & ASSISTANCE NEEDED



2 People Lift

Replacement Parts



REPLACEMENT PARTS

ITEM	PART NO.	DESCRIPTION	QUANTITY
1	K7777	Lock & Key	1
2	K7779	Key Only (Specify Key Number)	1
3	K7758-3	Gas Strut	2
4	K7758-4	Top Mould Edge (1)	2

ITEM	PART NO.	DESCRIPTION	QUANTITY
5	K7540-1	Side Carry Handle (1)	2
6	K7748-15	Ball Bearing Slide Pair (2)	6
7	K7526-3	Eva Mat Pack (7)	7